

Wimbledon Grounds
Plough Lane
Wimbledon
London
SW17



Luxurious new
1 & 3 bedroom apartments

EACH PRICED FOR IMMEDIATE SALE



An aborted bulk sale
has forced Galliard Homes to sell
all remaining apartments within
a limited time period

EACH DISCOUNTED WITH IMMEDIATE OCCUPATION

3A

1K

1M

1N

1E

1B

1A

1F

Galliard Reservations:

020 7620 1500

galliardhomes.com/wimbledon



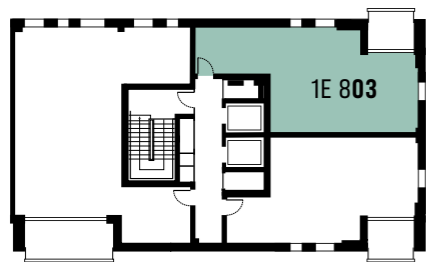
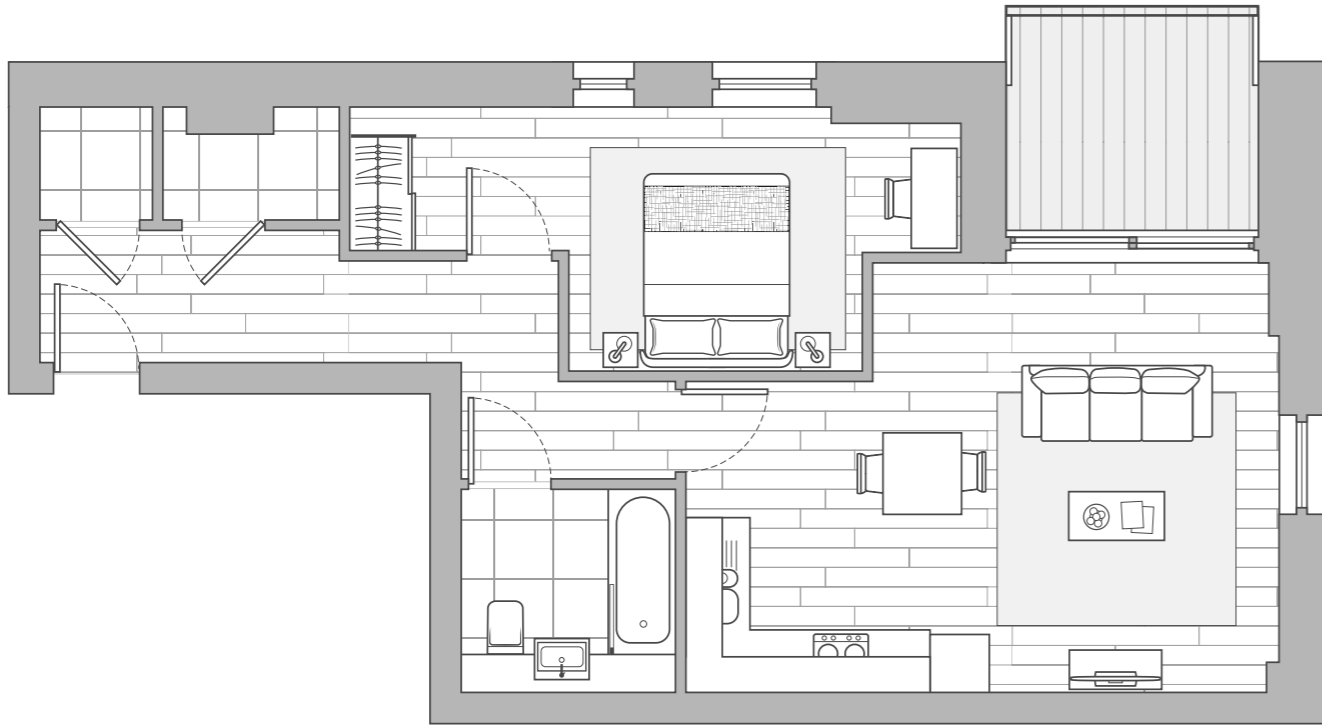
WIMBLEDON GROUNDS

1 BEDROOM APARTMENTS



1E

BLOCK



8TH

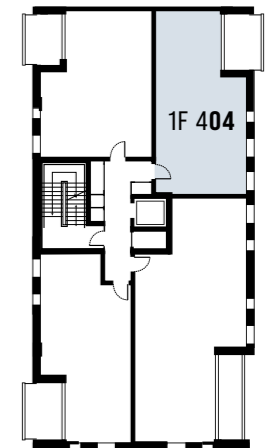
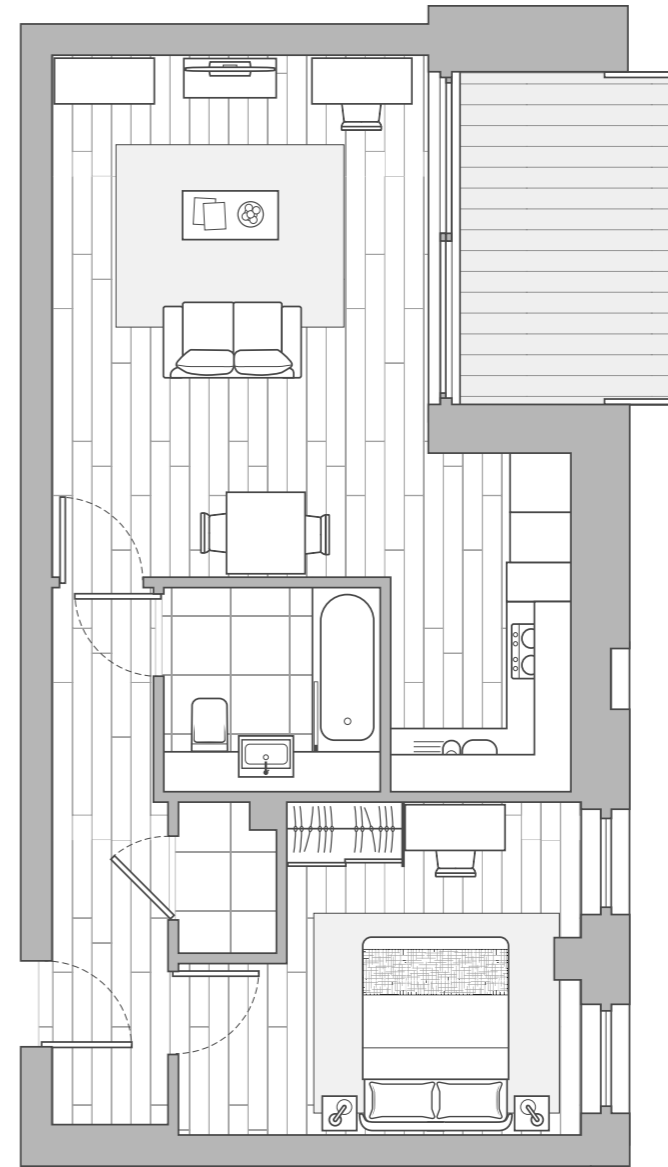
1E 803
1 Bedroom Apartment

INTERNAL AREA
55.3 sq m 595 sq ft

Floor plan layouts are intended to be correct, precise details may vary. Total areas shown are accurate to within 5%.

1F

BLOCK

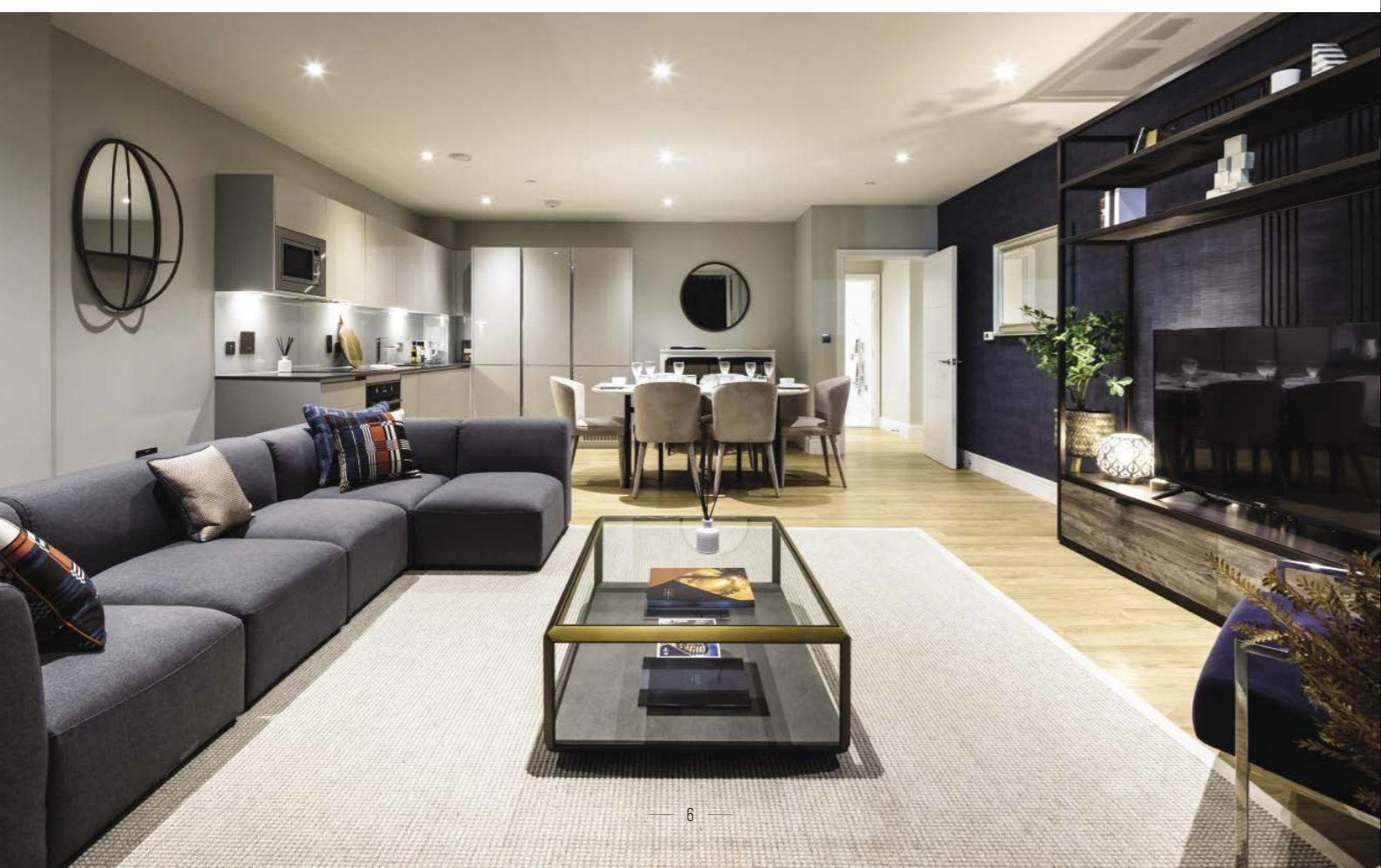


4TH

1F 404
1 Bedroom Apartment

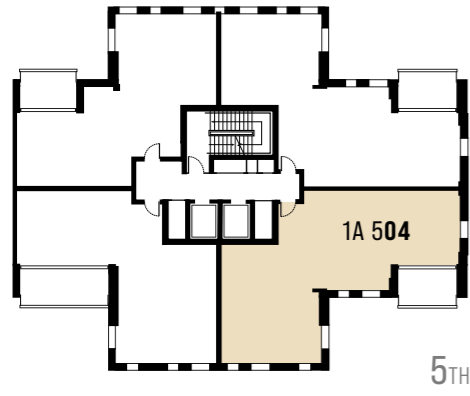
INTERNAL AREA
52.5 sq m 565 sq ft



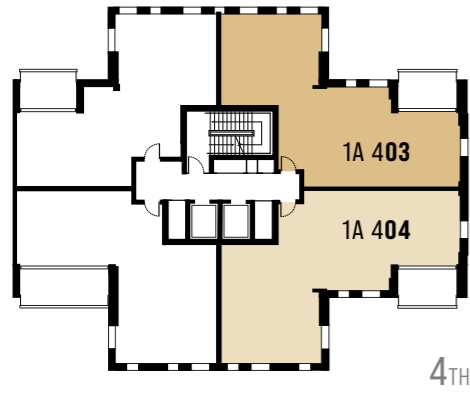


WIMBLEDON GROUNDS

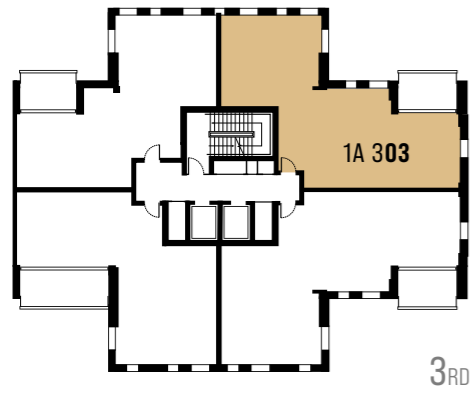
3 BEDROOM APARTMENTS
& MAISONNETTES



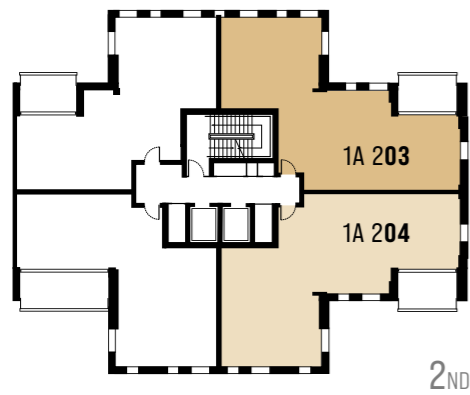
5TH



4TH



3RD



2ND

1A 203
3 Bedroom Apartment
 INTERNAL AREA
 86.2 sq m 928 sq ft

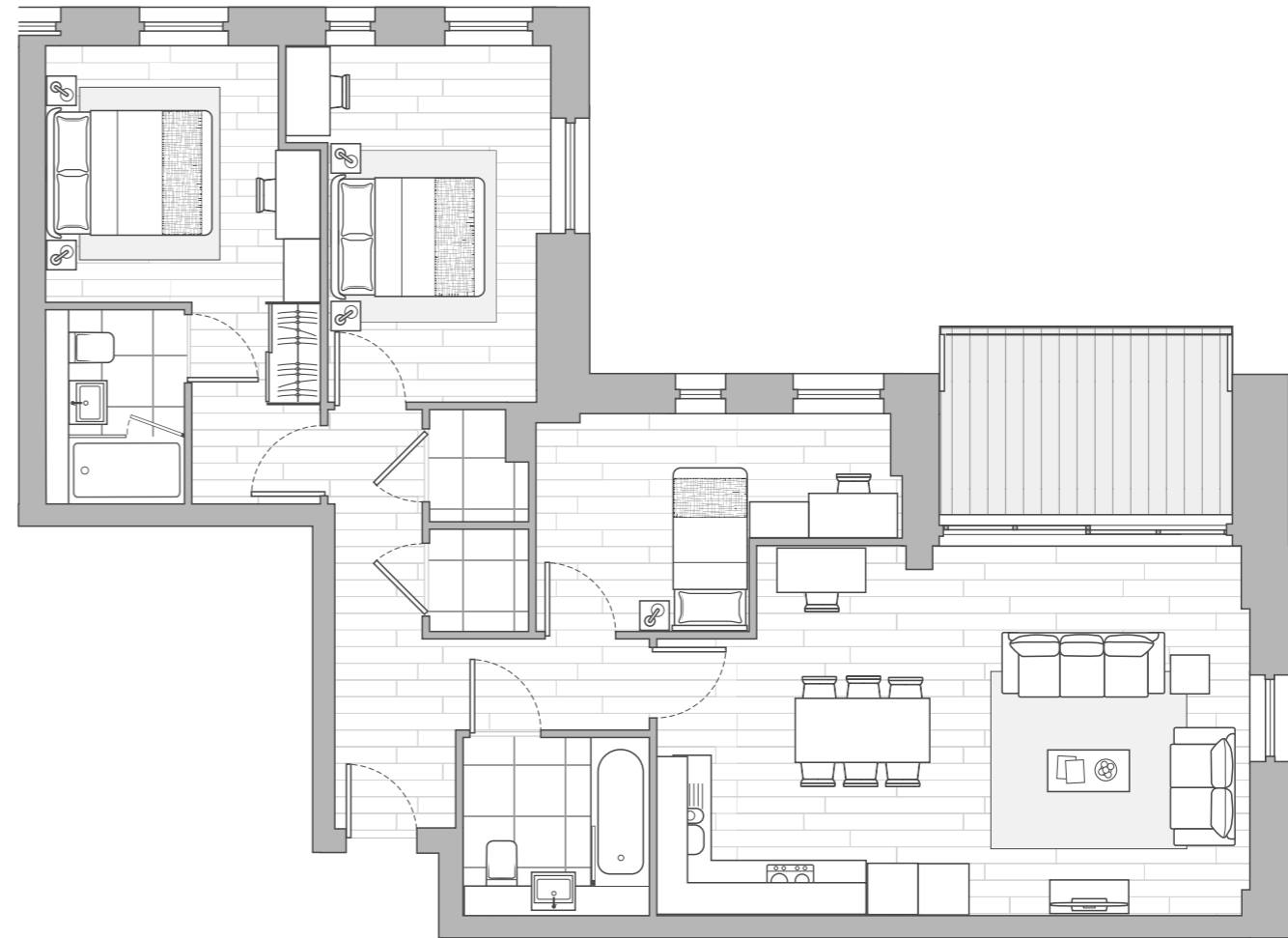
1A 303
3 Bedroom Apartment
 INTERNAL AREA
 86.3 sq m 929 sq ft

1A 403
3 Bedroom Apartment
 INTERNAL AREA
 86.3 sq m 928 sq ft

1A 204
3 Bedroom Apartment
 INTERNAL AREA
 92.3 sq m 994 sq ft

1A 404
3 Bedroom Apartment
 INTERNAL AREA
 92.3 sq m 994 sq ft

1A 504
3 Bedroom Apartment
 INTERNAL AREA
 92.3 sq m 993 sq ft



1A

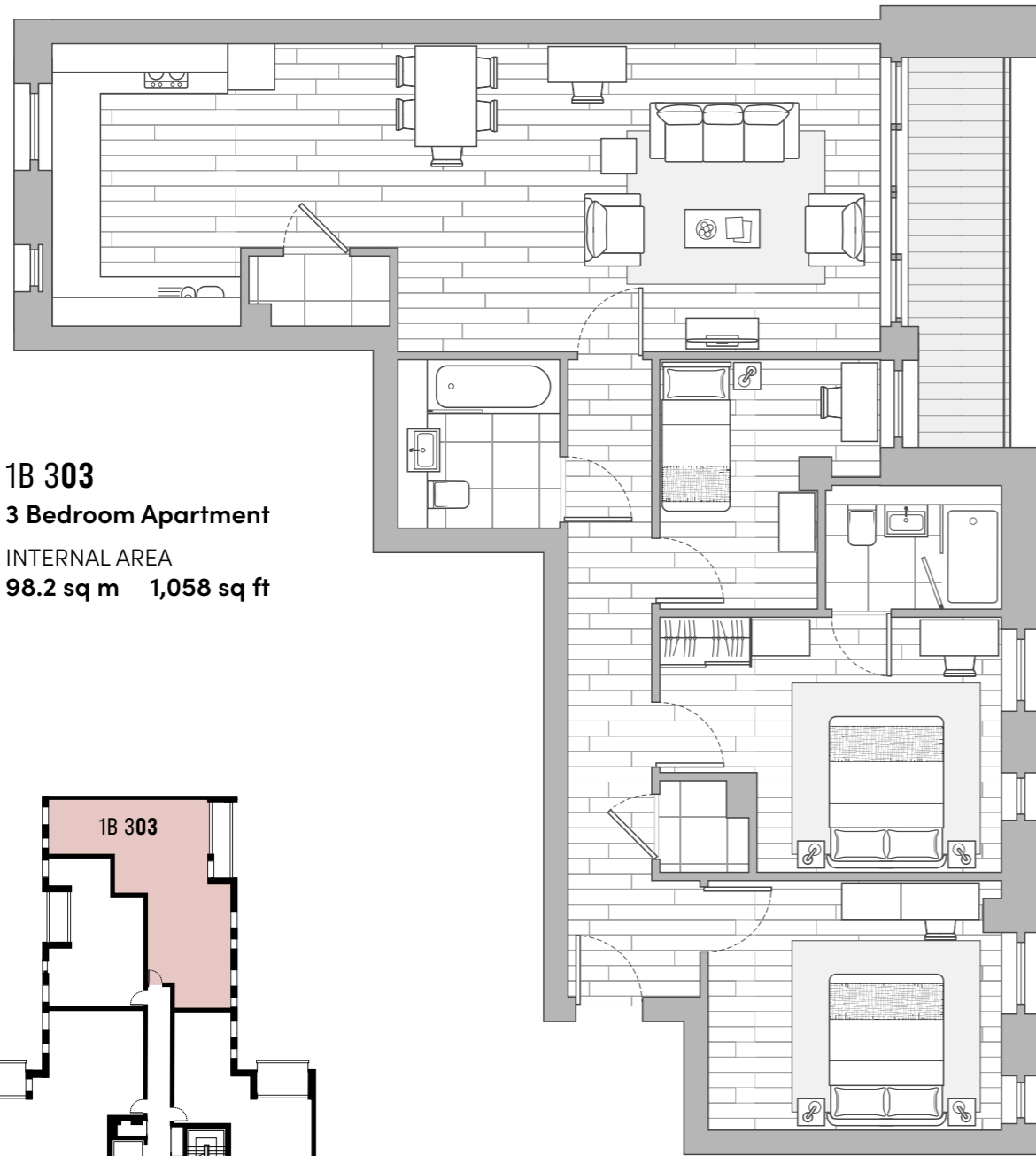
BLOCK



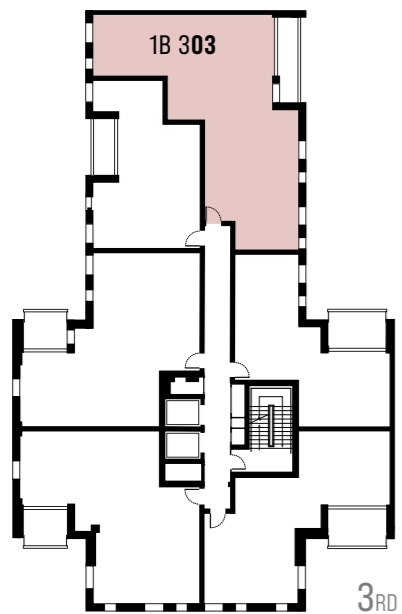
Floor plan layouts are intended to be correct, precise details may vary. Total areas shown are accurate to within 5%.

1B

BLOCK



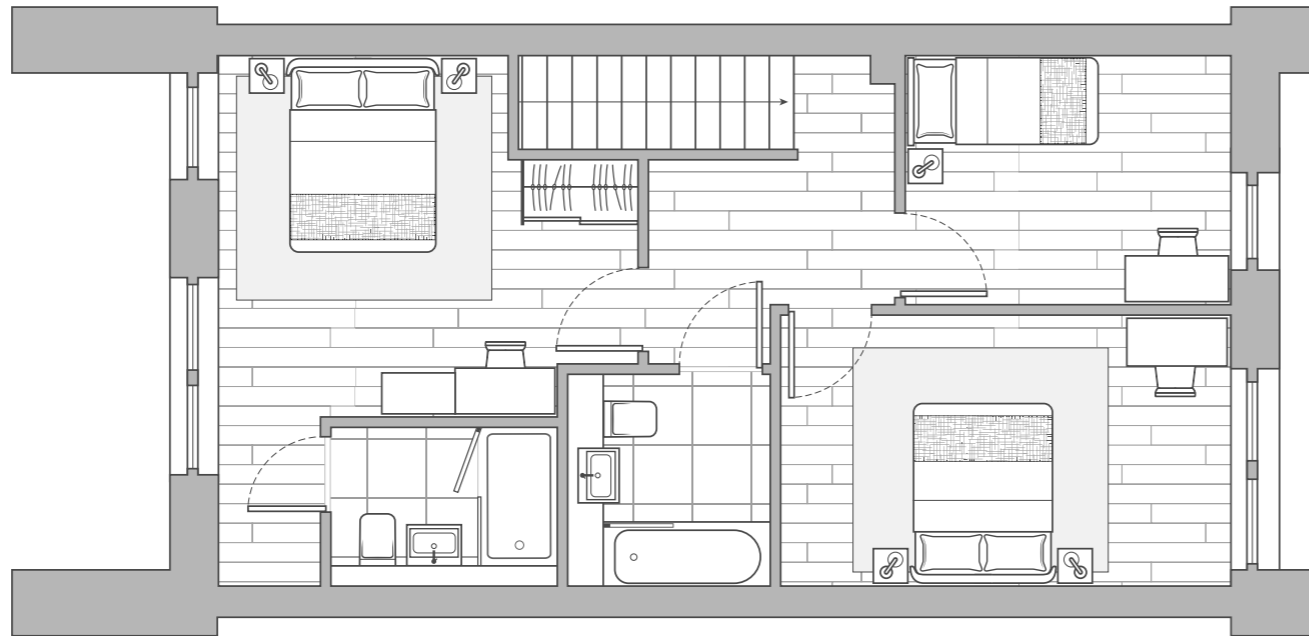
1B 303
3 Bedroom Apartment
INTERNAL AREA
98.2 sq m 1,058 sq ft



Floor plan layouts are intended to be correct, precise details may vary. Total areas shown are accurate to within 5%.

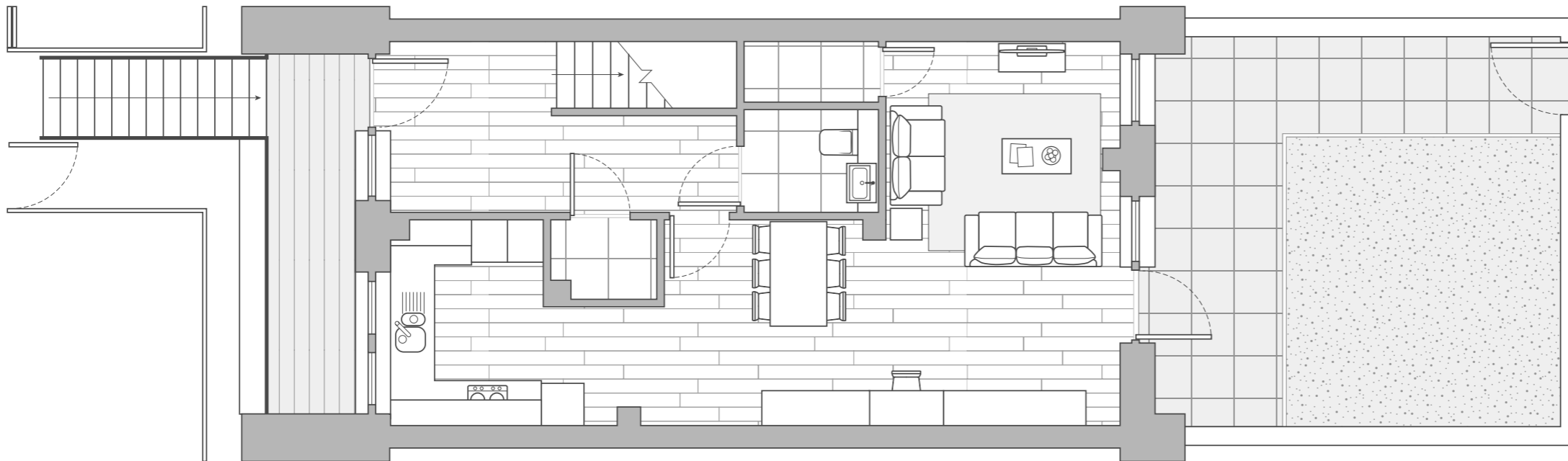


1B 303

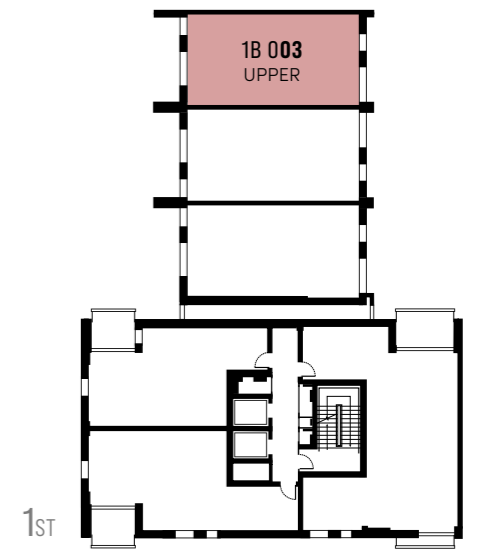


UPPER LEVEL

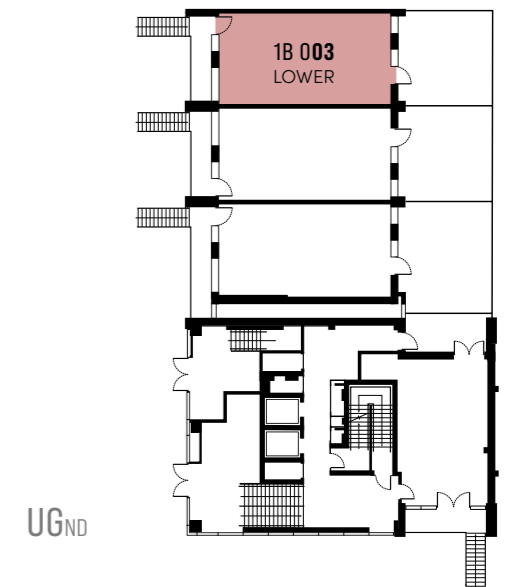
1B 003
3 Bedroom Maisonette
INTERNAL AREA
112.2 sq m 1,208 sq ft



LOWER LEVEL

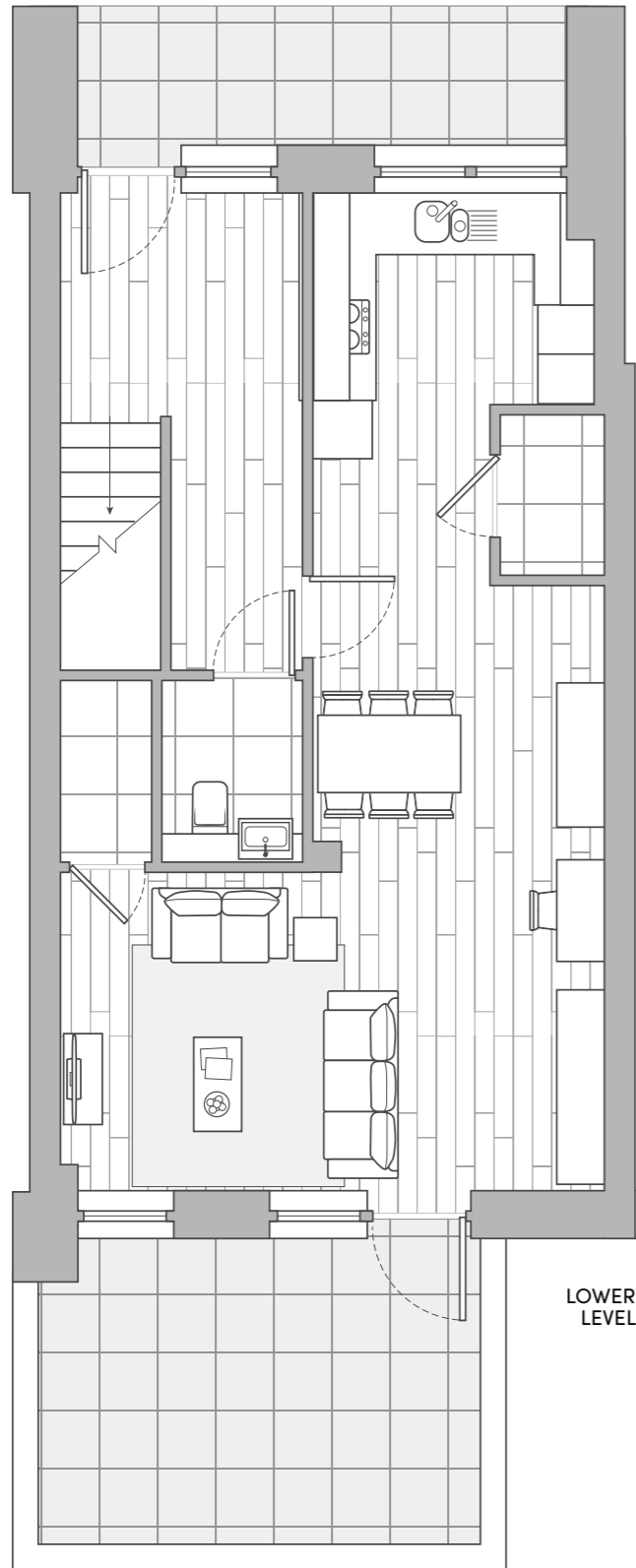


1ST

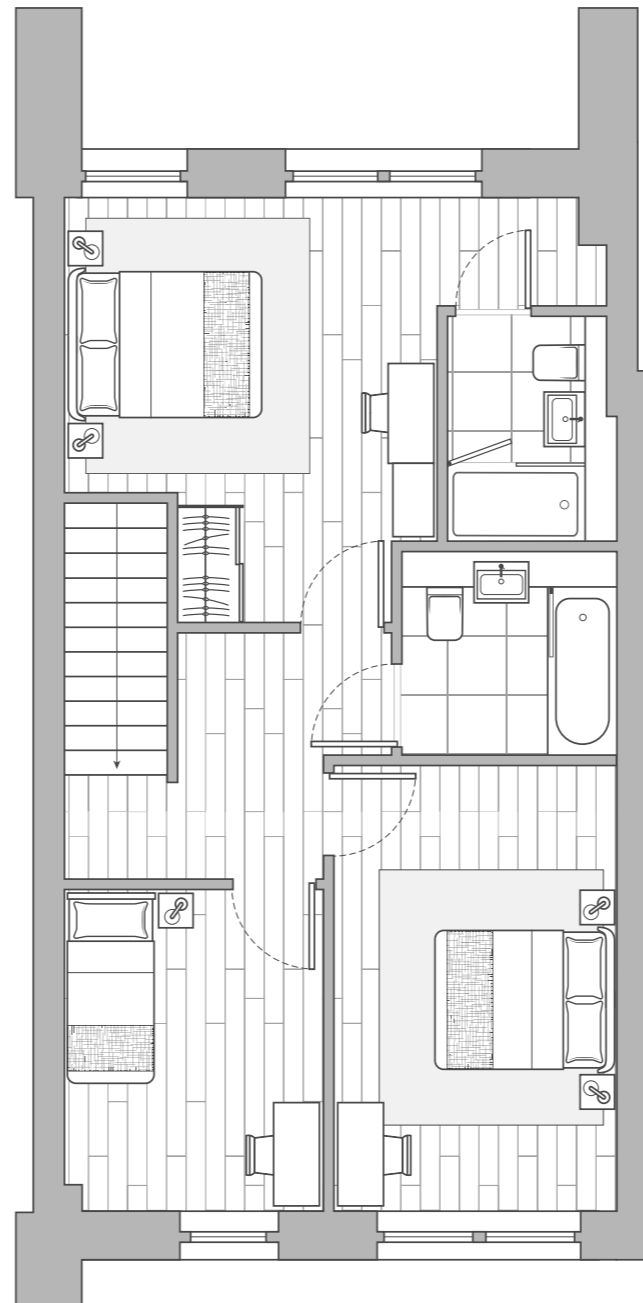


UGND

Floor plan layouts are intended to be correct, precise details may vary. Total areas shown are accurate to within 5%.

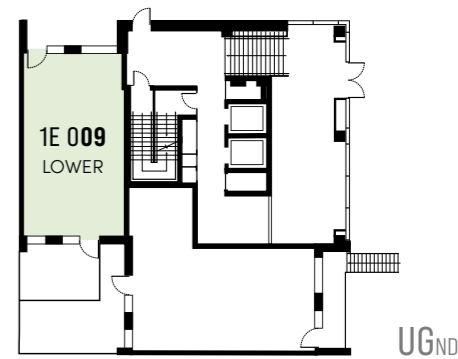
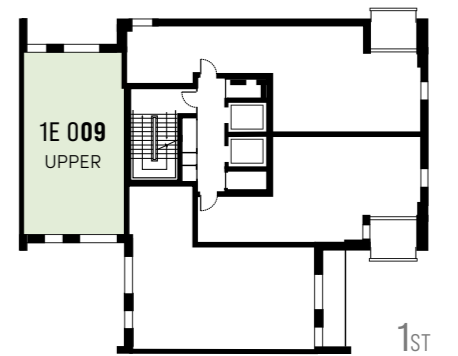


LOWER LEVEL

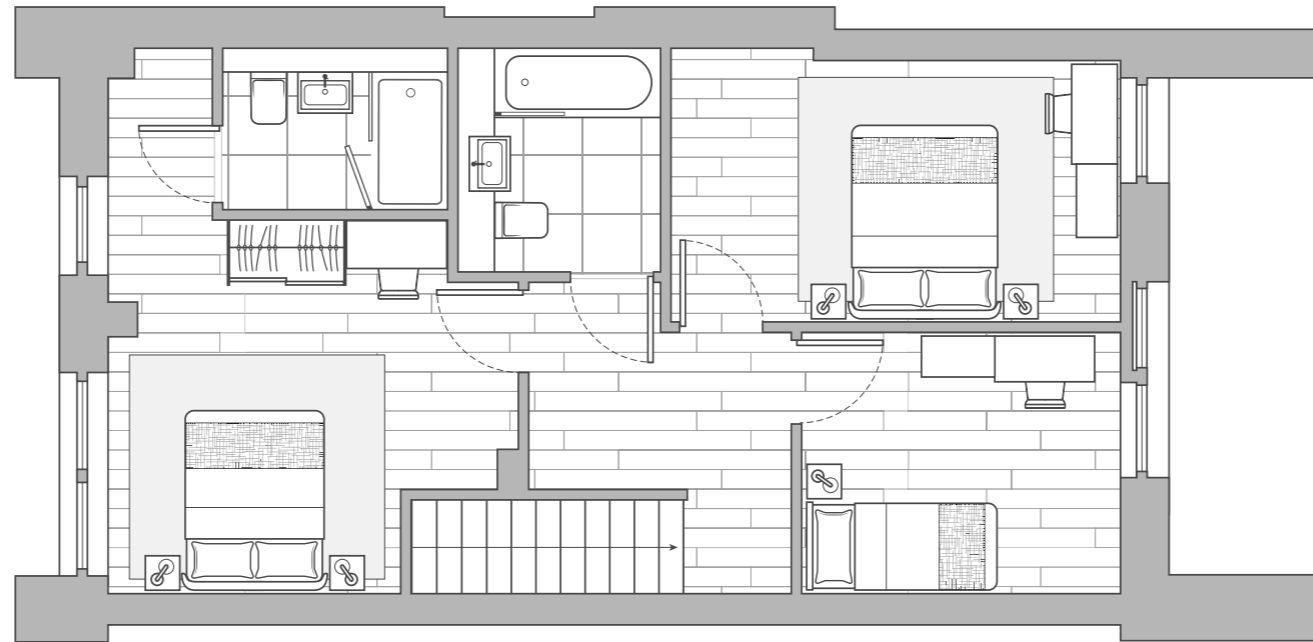


UPPER LEVEL

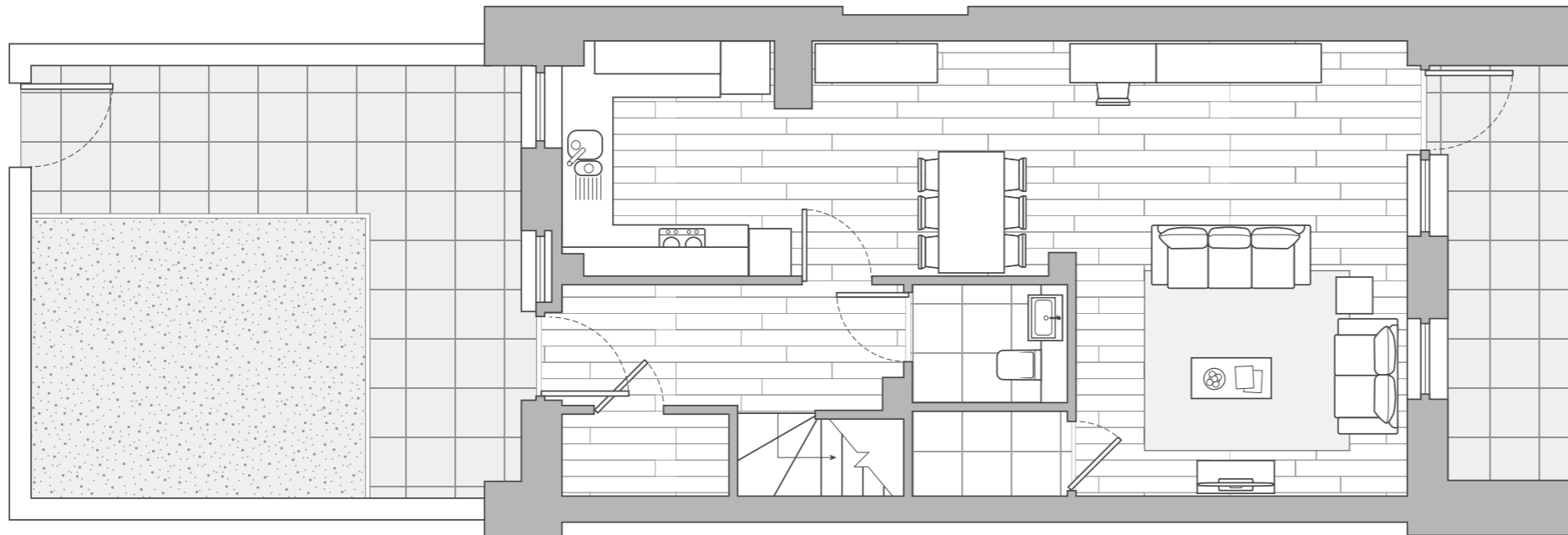
1E 009
3 Bedroom Maisonette
INTERNAL AREA
116.0 sq m 1,248 sq ft



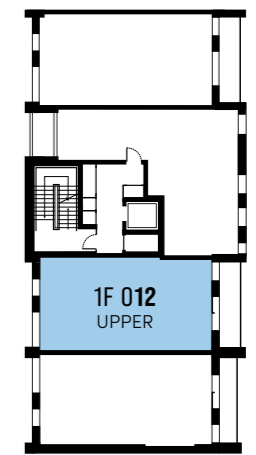
1F 012
3 Bedroom Maisonette
INTERNAL AREA
114.0 sq m 1,227 sq ft



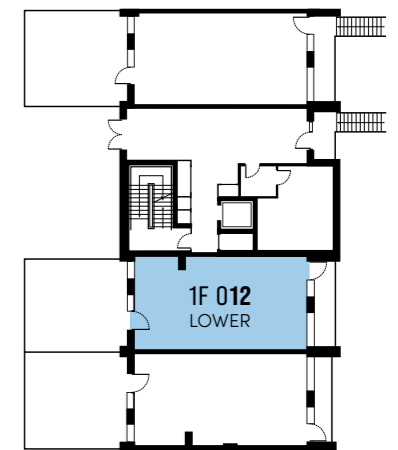
UPPER LEVEL



LOWER LEVEL



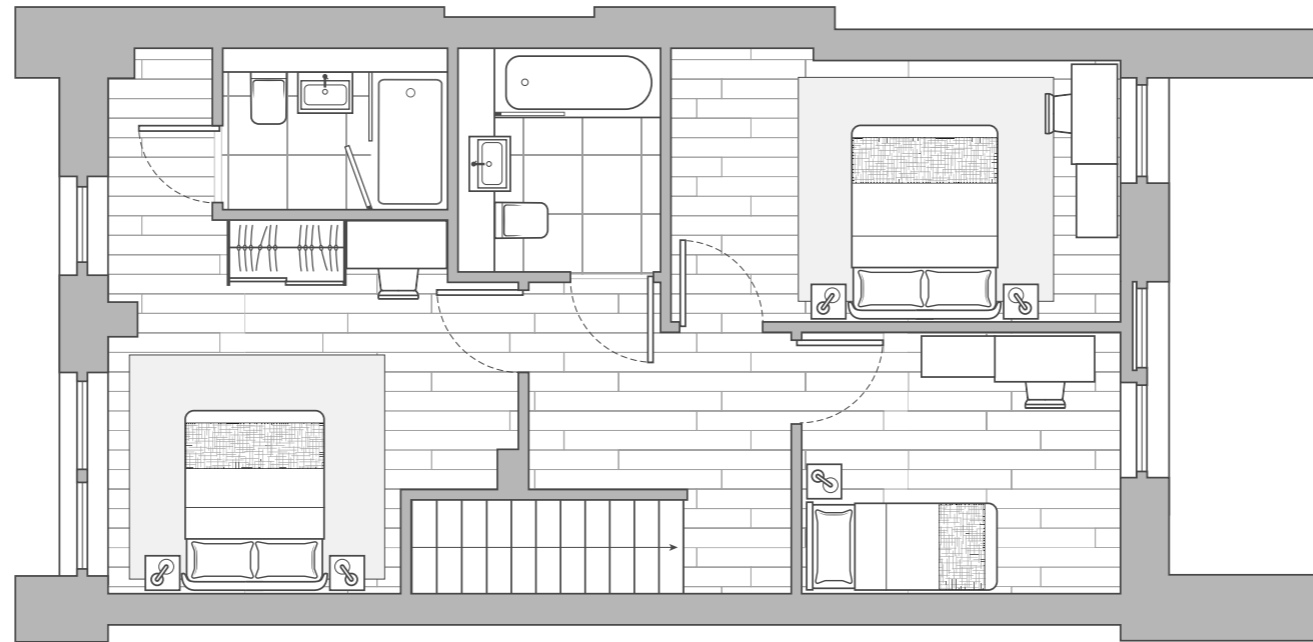
1ST



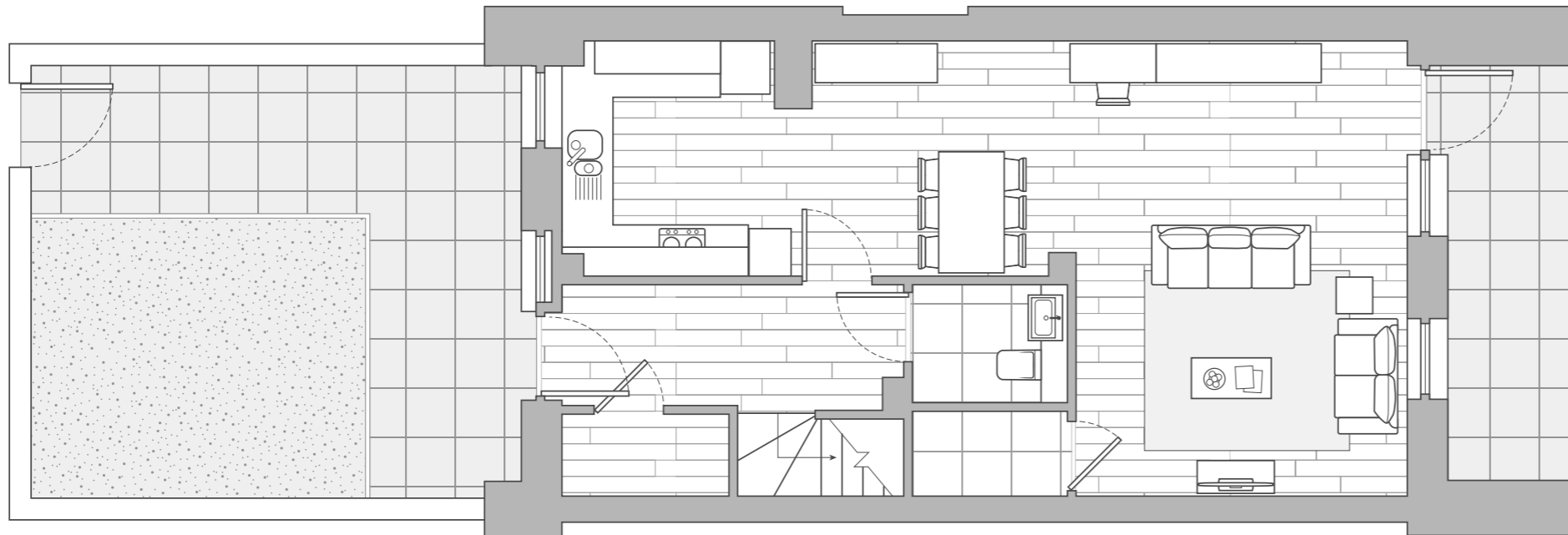
UGND

Floor plan layouts are intended to be correct, precise details may vary. Total areas shown are accurate to within 5%.

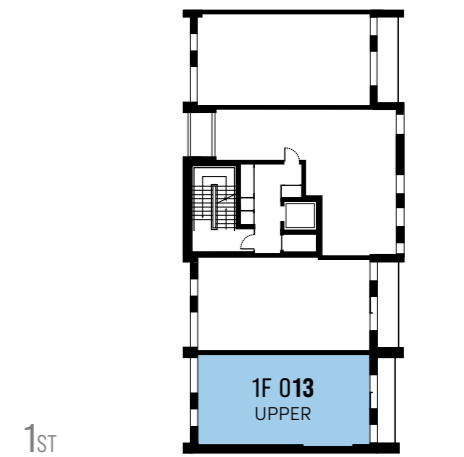
1F 013
3 Bedroom Maisonette
INTERNAL AREA
112.1 sq m 1,206 sq ft



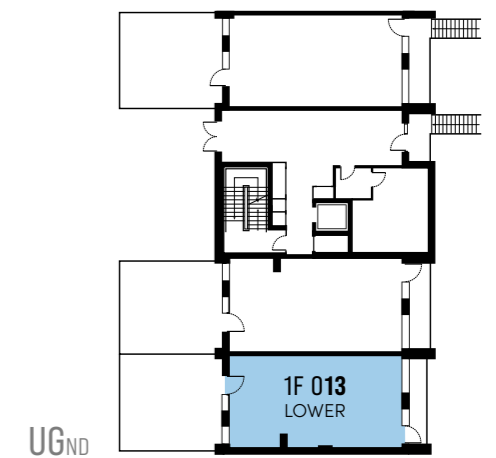
UPPER LEVEL



LOWER LEVEL

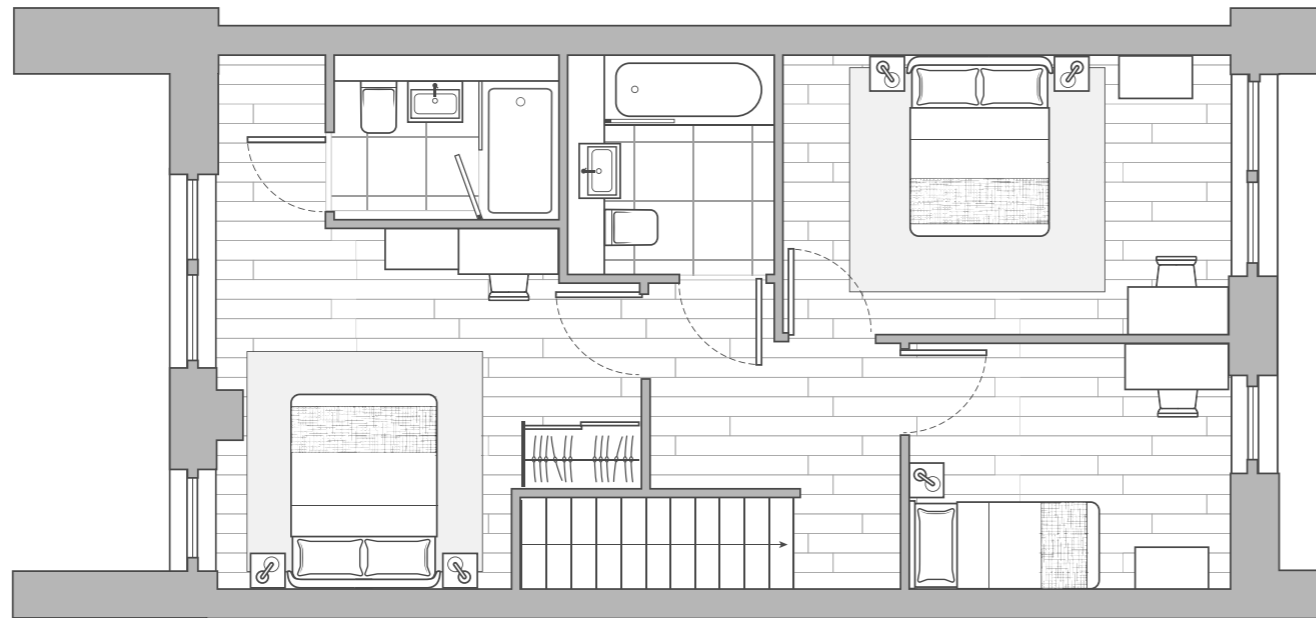


1ST



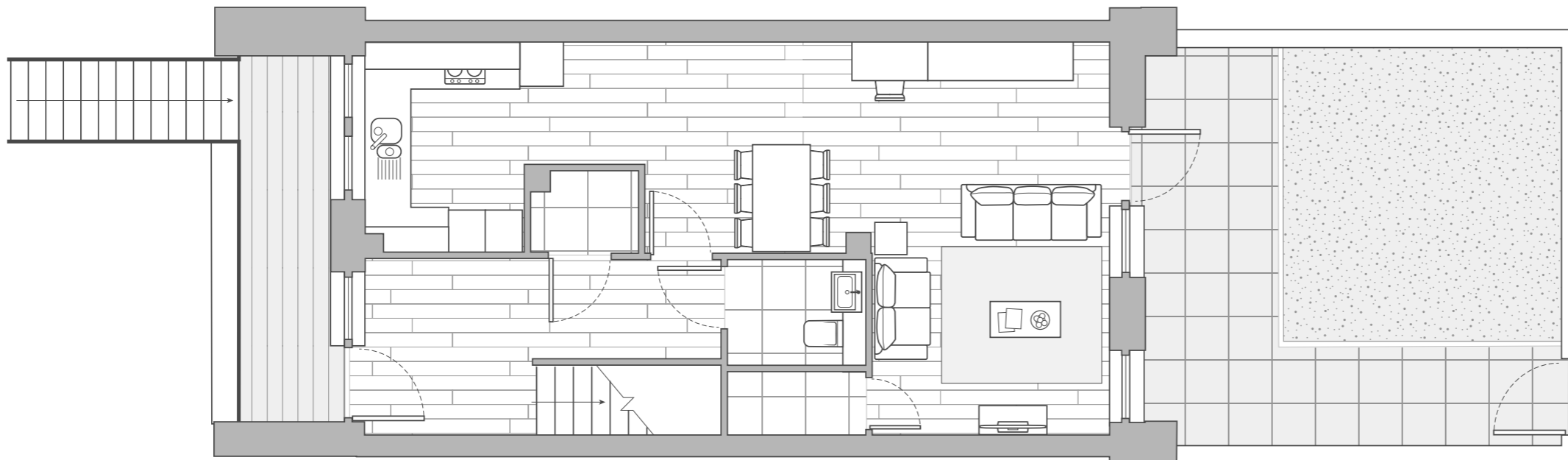
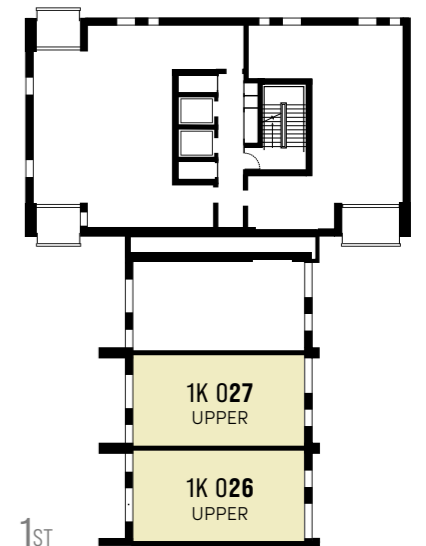
UGND

Floor plan layouts are intended to be correct, precise details may vary. Total areas shown are accurate to within 5%.

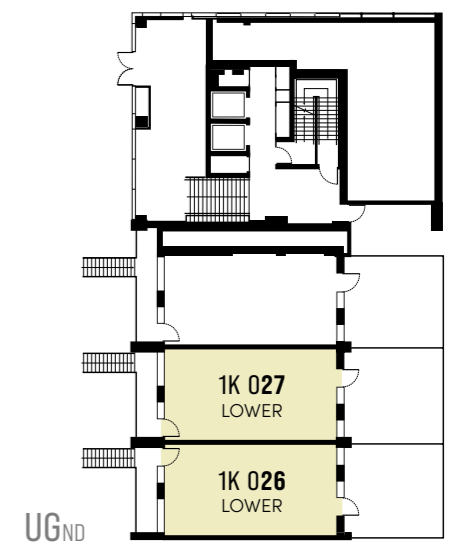


UPPER LEVEL

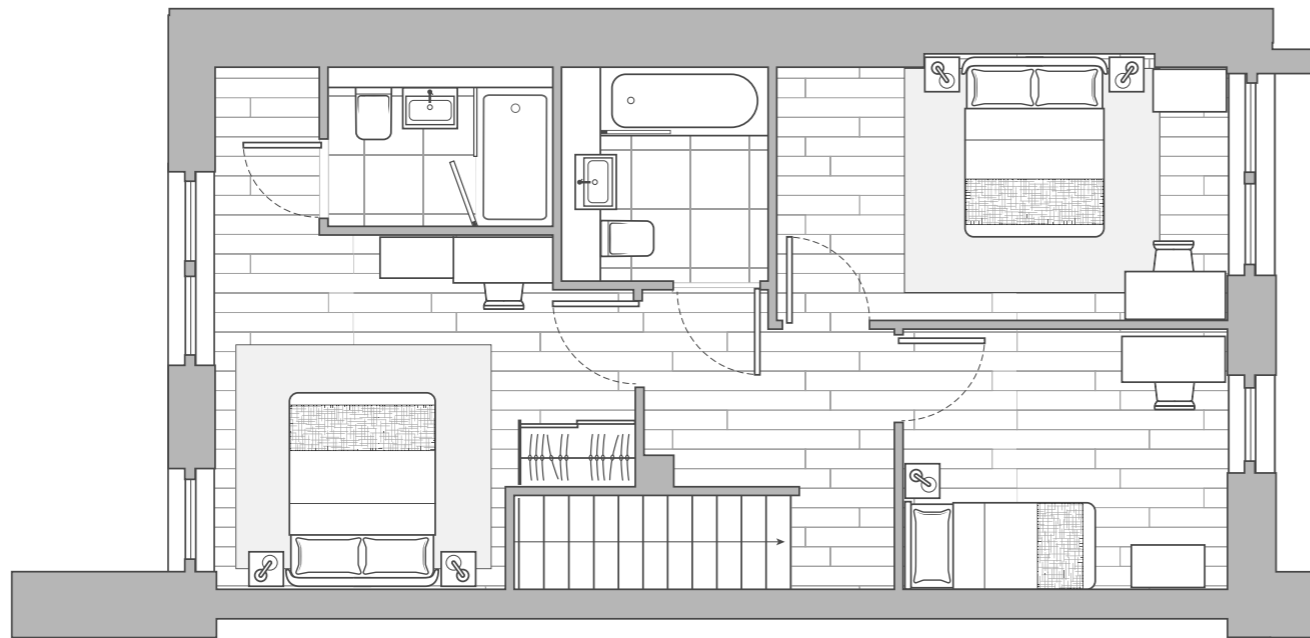
1K 026
1K 027
3 Bedroom Maisonette
INTERNAL AREA
112.2 sq m 1,208 sq ft



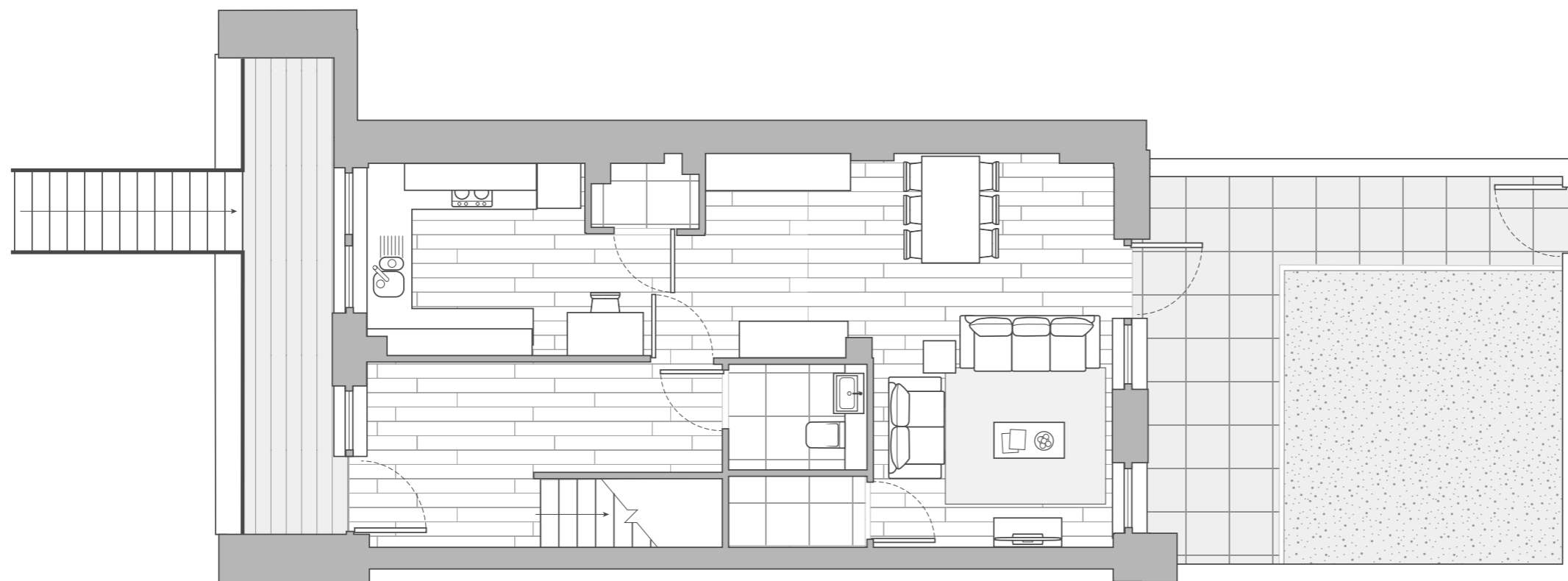
LOWER LEVEL



Floor plan layouts are intended to be correct, precise details may vary. Total areas shown are accurate to within 5%.

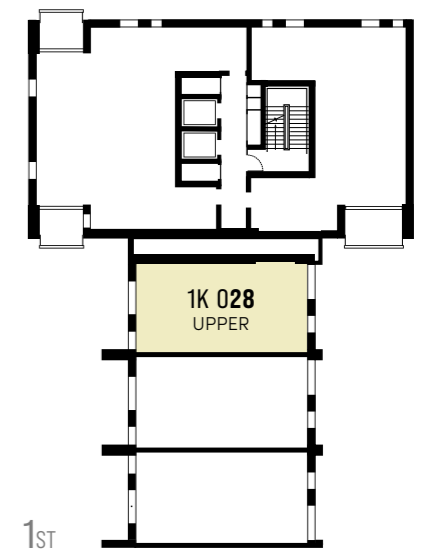


UPPER LEVEL

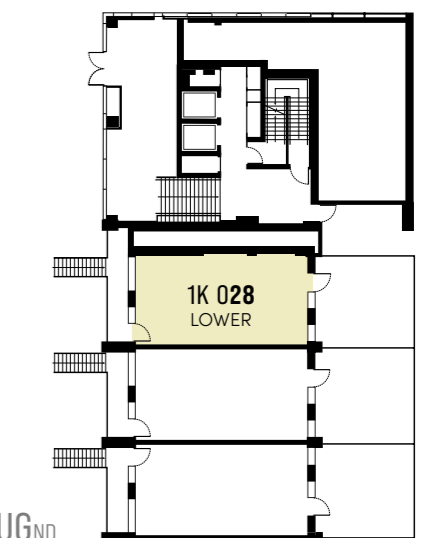


LOWER LEVEL

1K 028
3 Bedroom Maisonette
INTERNAL AREA
111.6 sq m 1,201 sq ft

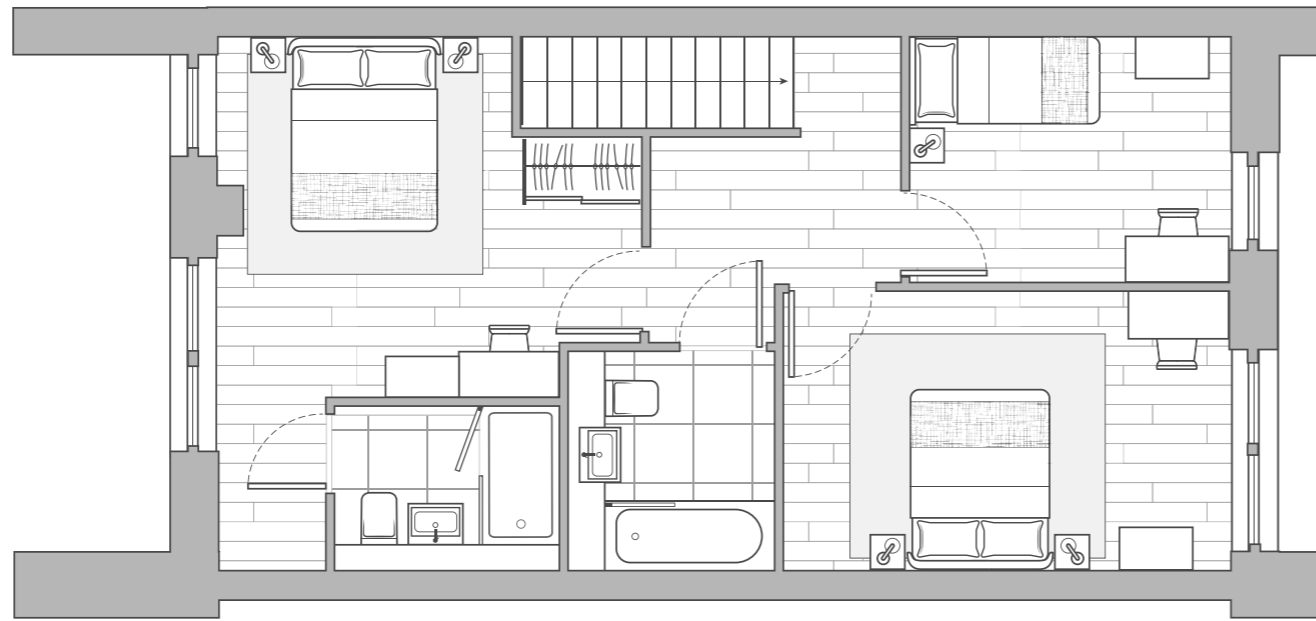


1st



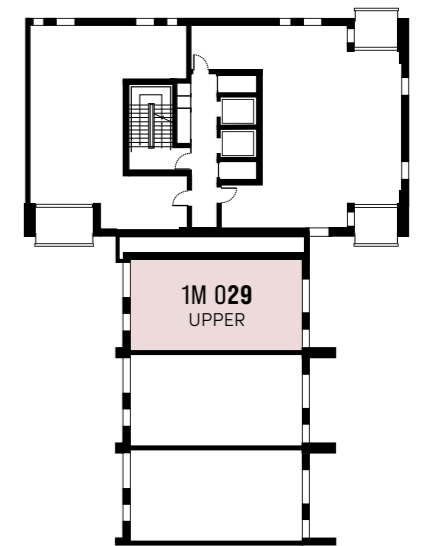
UGND

Floor plan layouts are intended to be correct, precise details may vary. Total areas shown are accurate to within 5%.

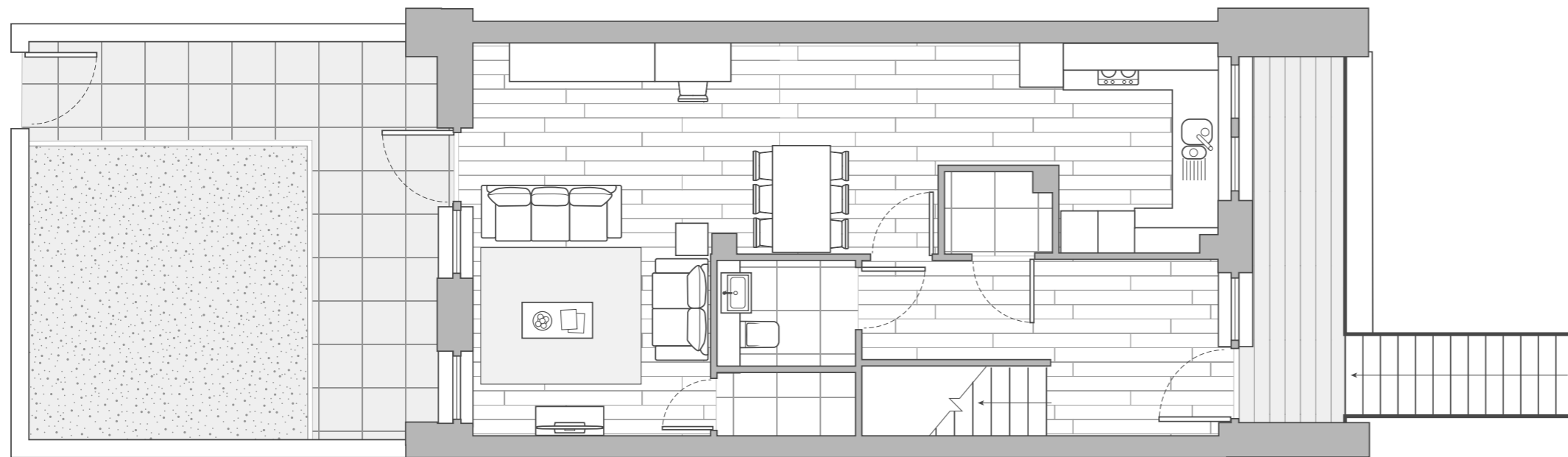


UPPER LEVEL

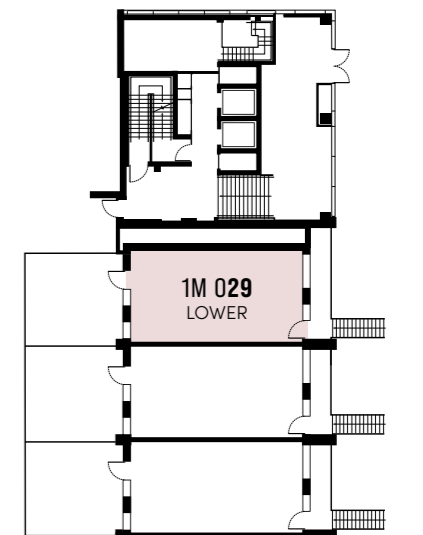
1M 029
3 Bedroom Maisonette
INTERNAL AREA
112.6 sq m 1,212 sq ft



1ST

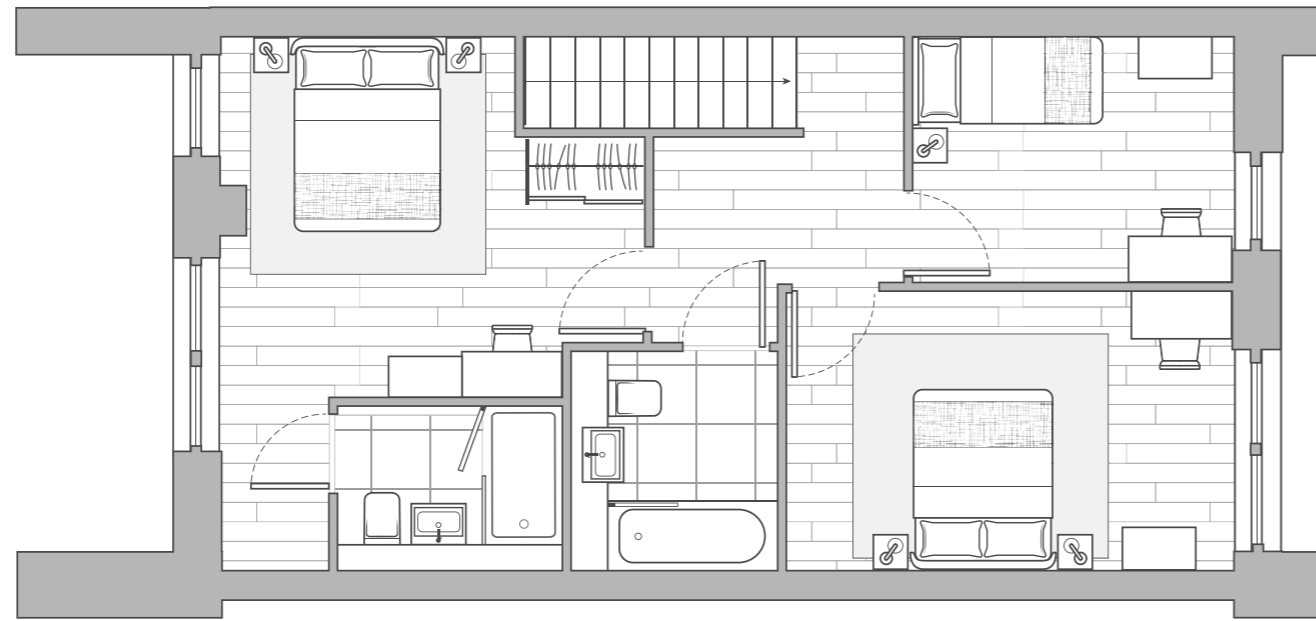


LOWER LEVEL



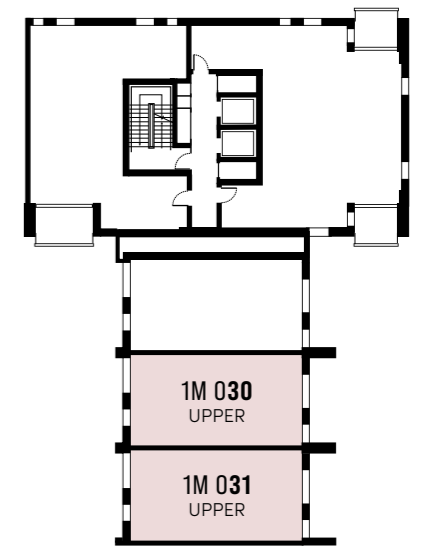
UG_{ND}

Floor plan layouts are intended to be correct, precise details may vary. Total areas shown are accurate to within 5%.

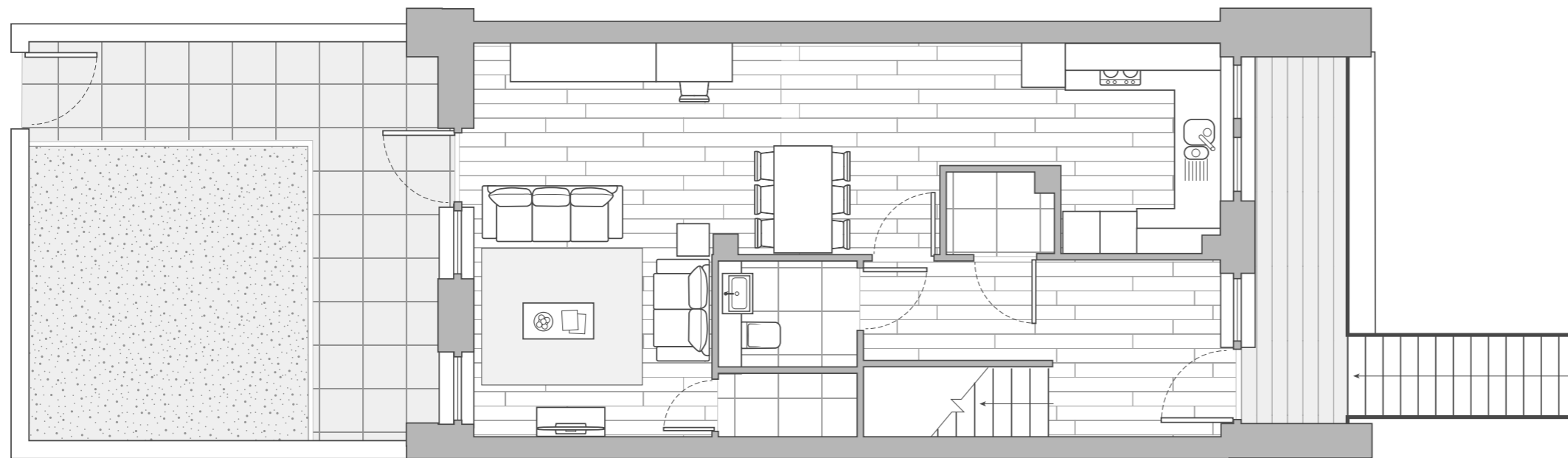


UPPER LEVEL

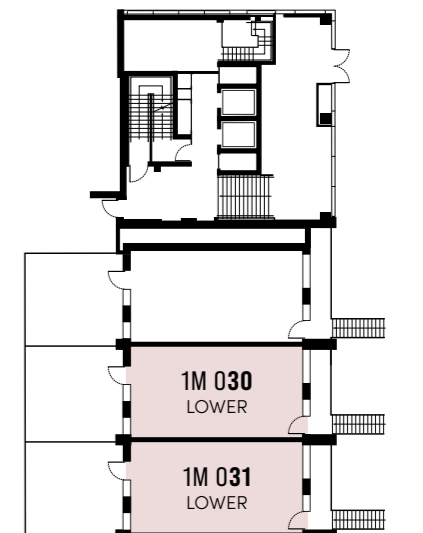
1M 030
1M 031
3 Bedroom Maisonette
INTERNAL AREA
112.0 sq m 1,205 sq ft



1ST

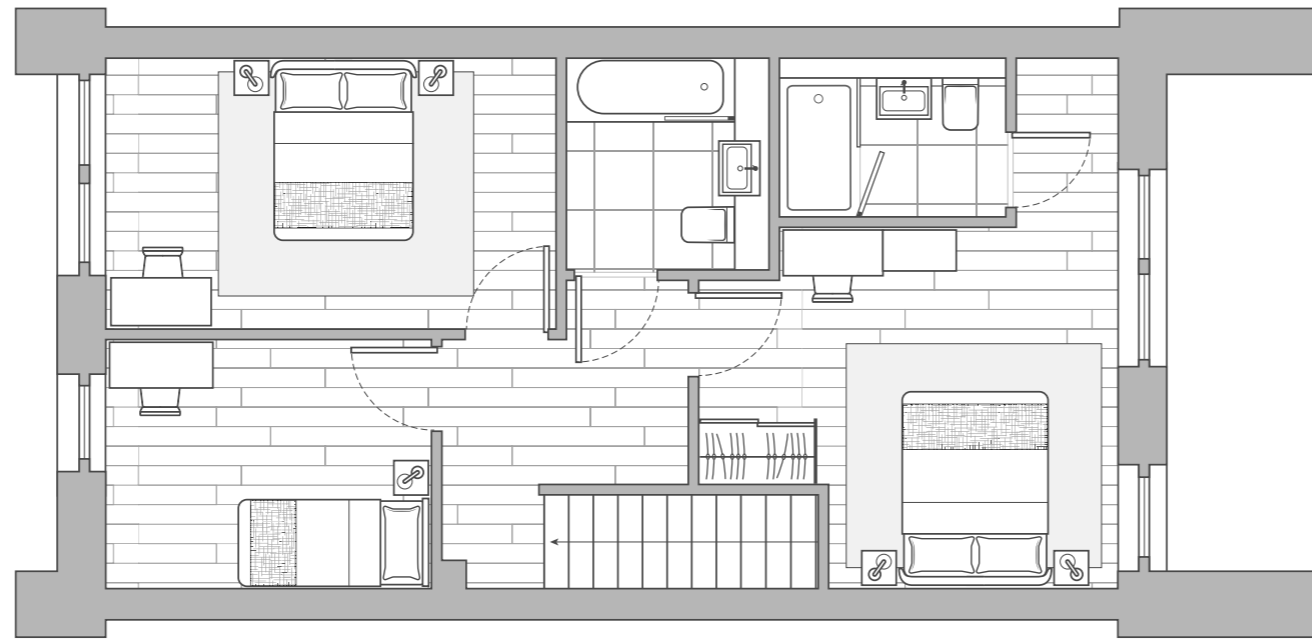


LOWER LEVEL



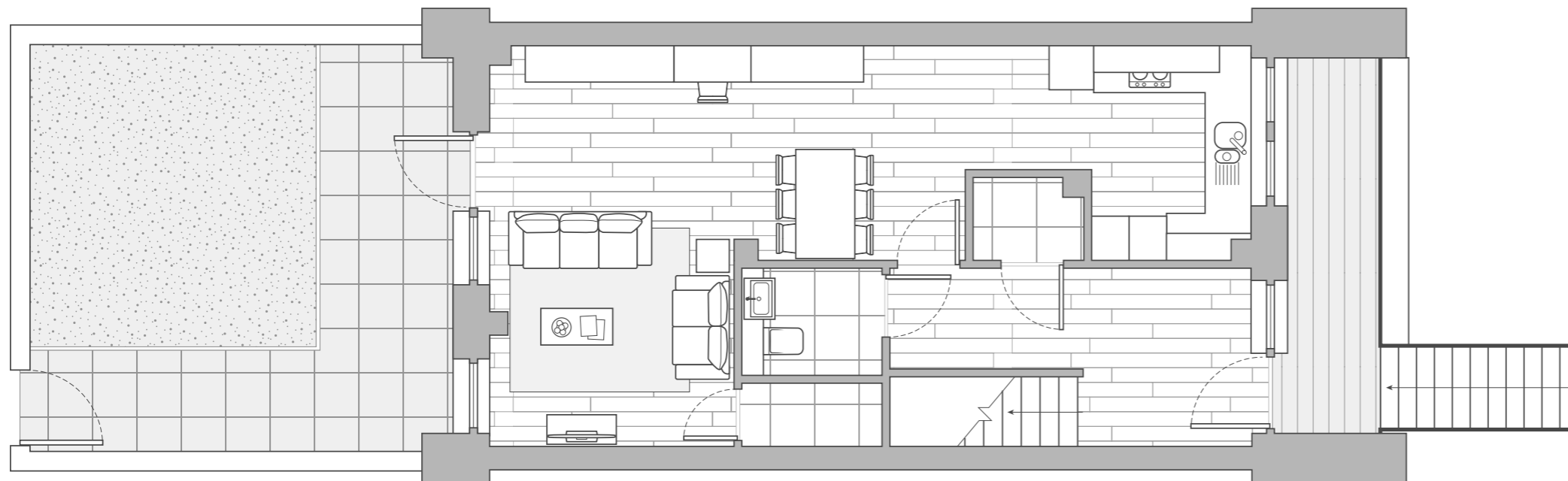
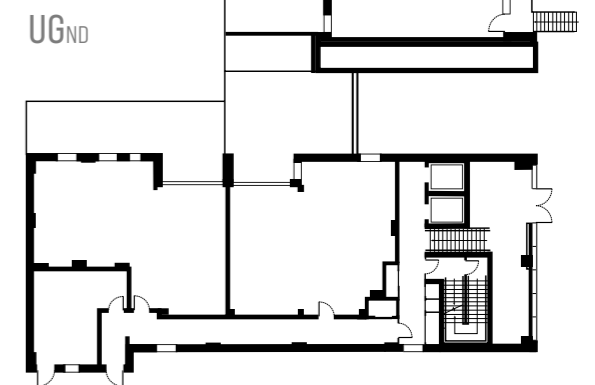
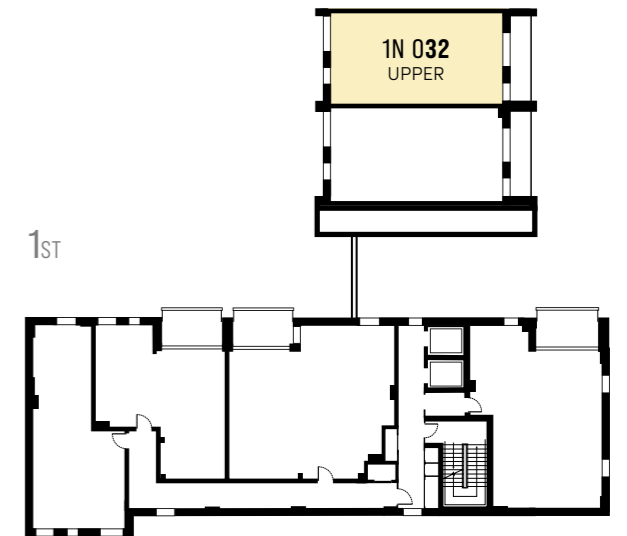
UG_{ND}

Floor plan layouts are intended to be correct, precise details may vary. Total areas shown are accurate to within 5%.



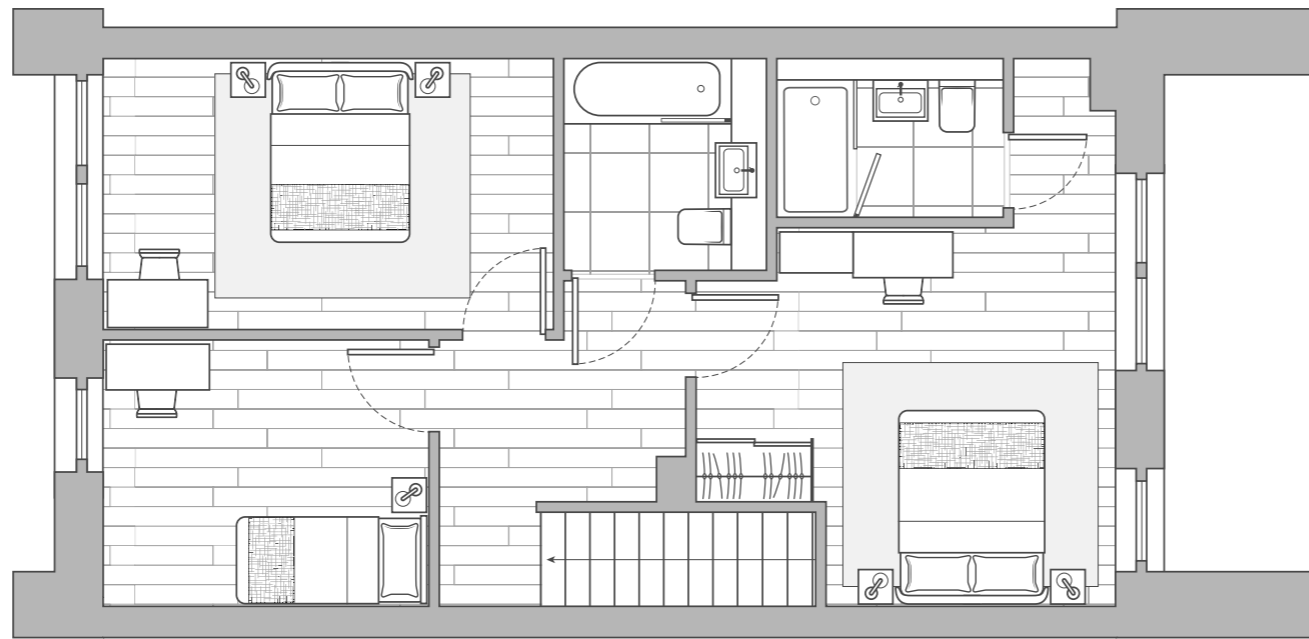
UPPER LEVEL

1N 032
3 Bedroom Maisonette
INTERNAL AREA
112.2 sq m 1,208 sq ft



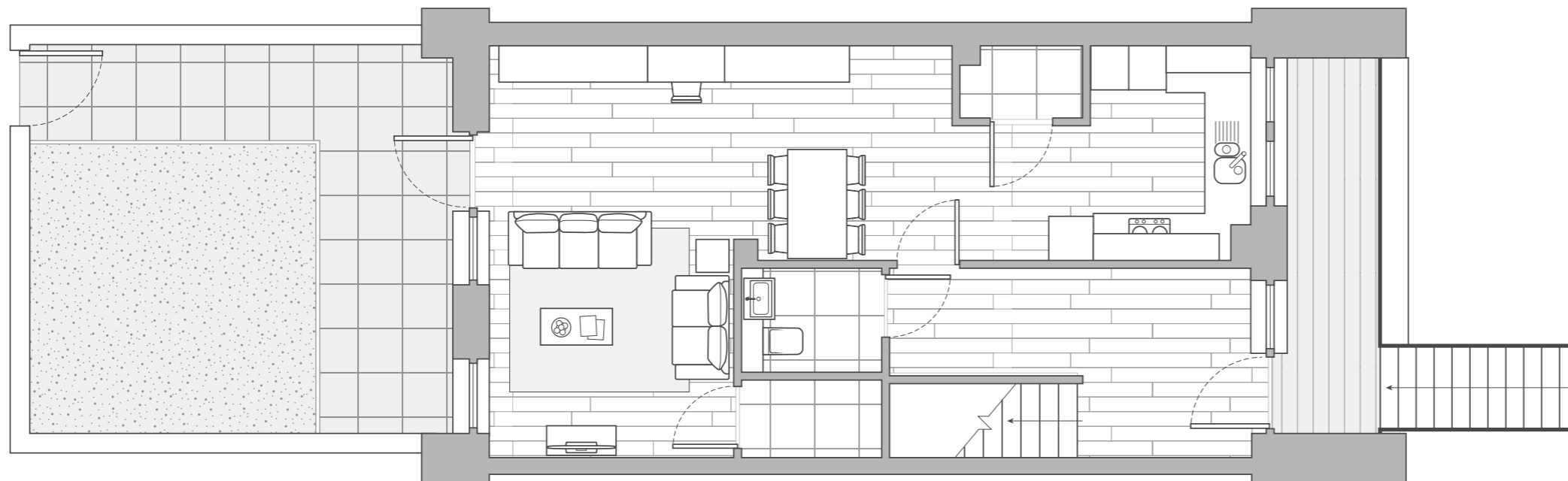
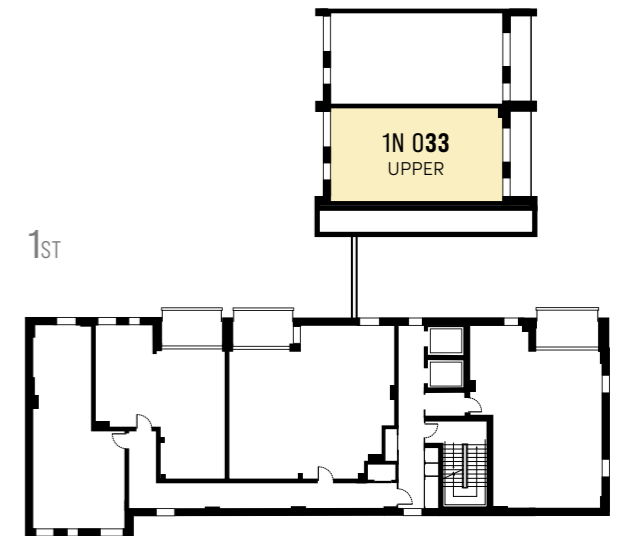
LOWER LEVEL

Floor plan layouts are intended to be correct, precise details may vary. Total areas shown are accurate to within 5%.

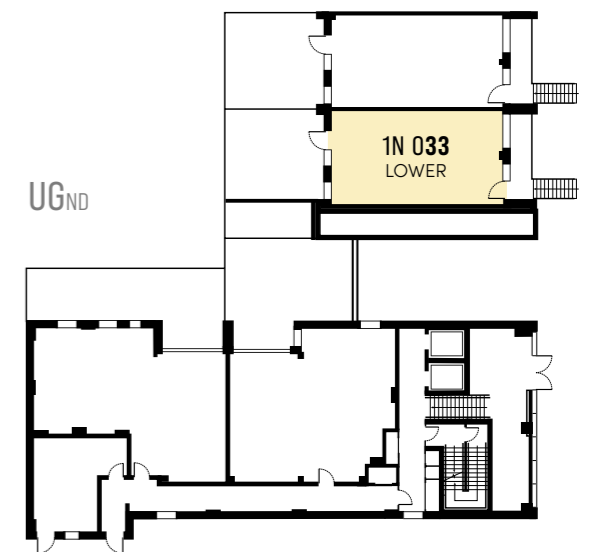


UPPER LEVEL

1N 033
3 Bedroom Maisonette
INTERNAL AREA
113.9 sq m 1,226 sq ft



LOWER LEVEL



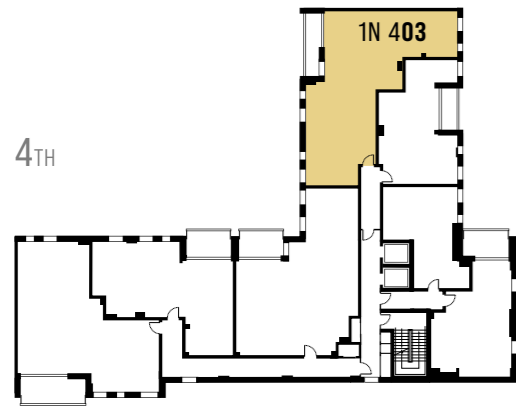
Floor plan layouts are intended to be correct, precise details may vary. Total areas shown are accurate to within 5%.

1N

BLOCK

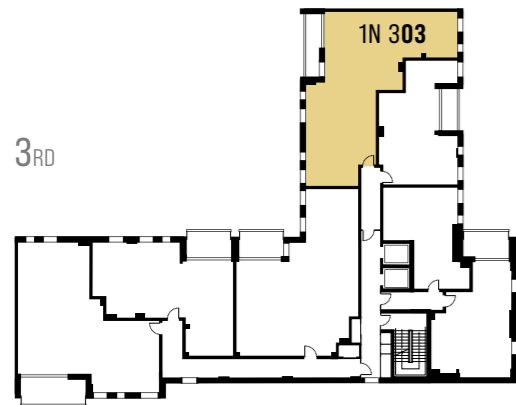


4TH



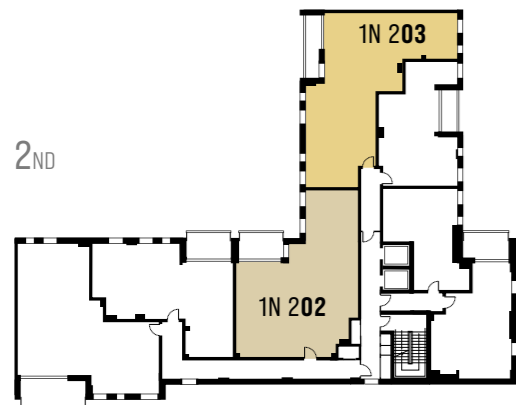
1N 403

3RD



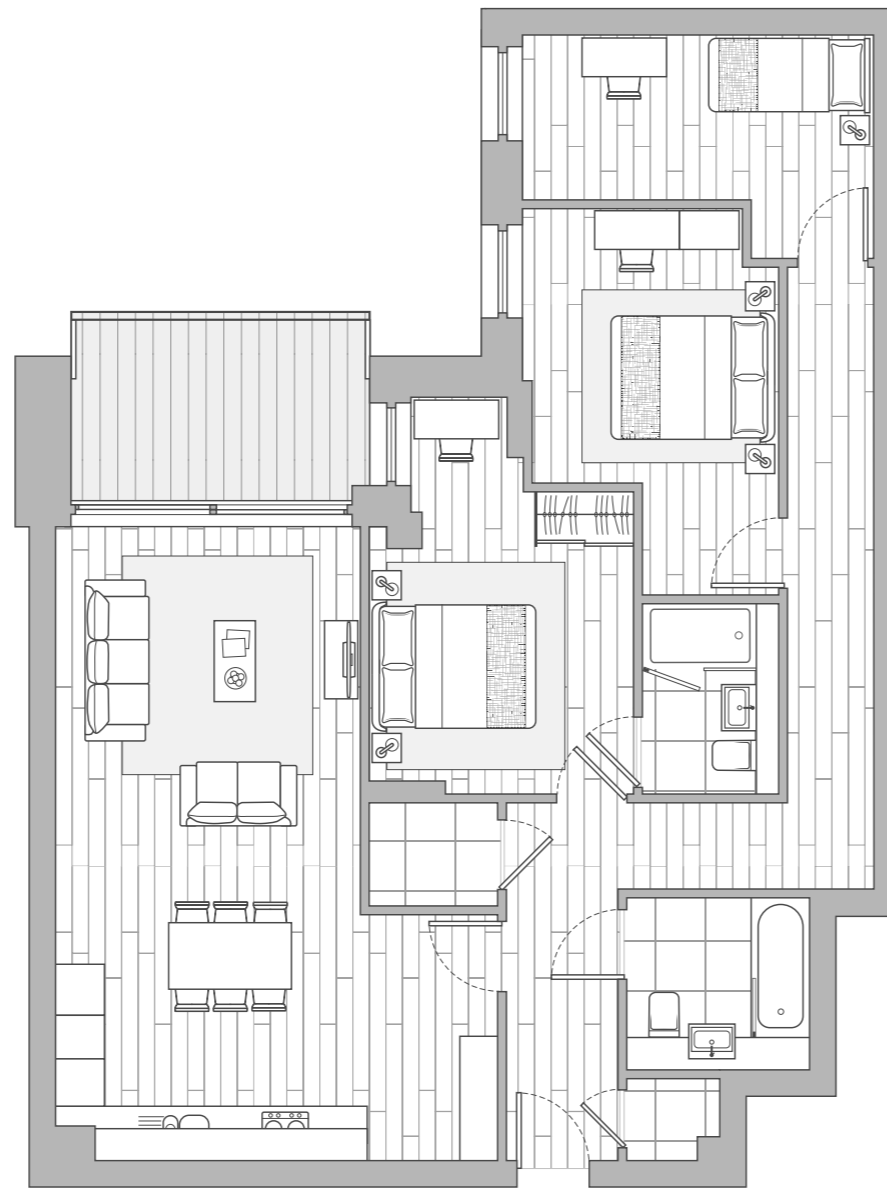
1N 303

2ND

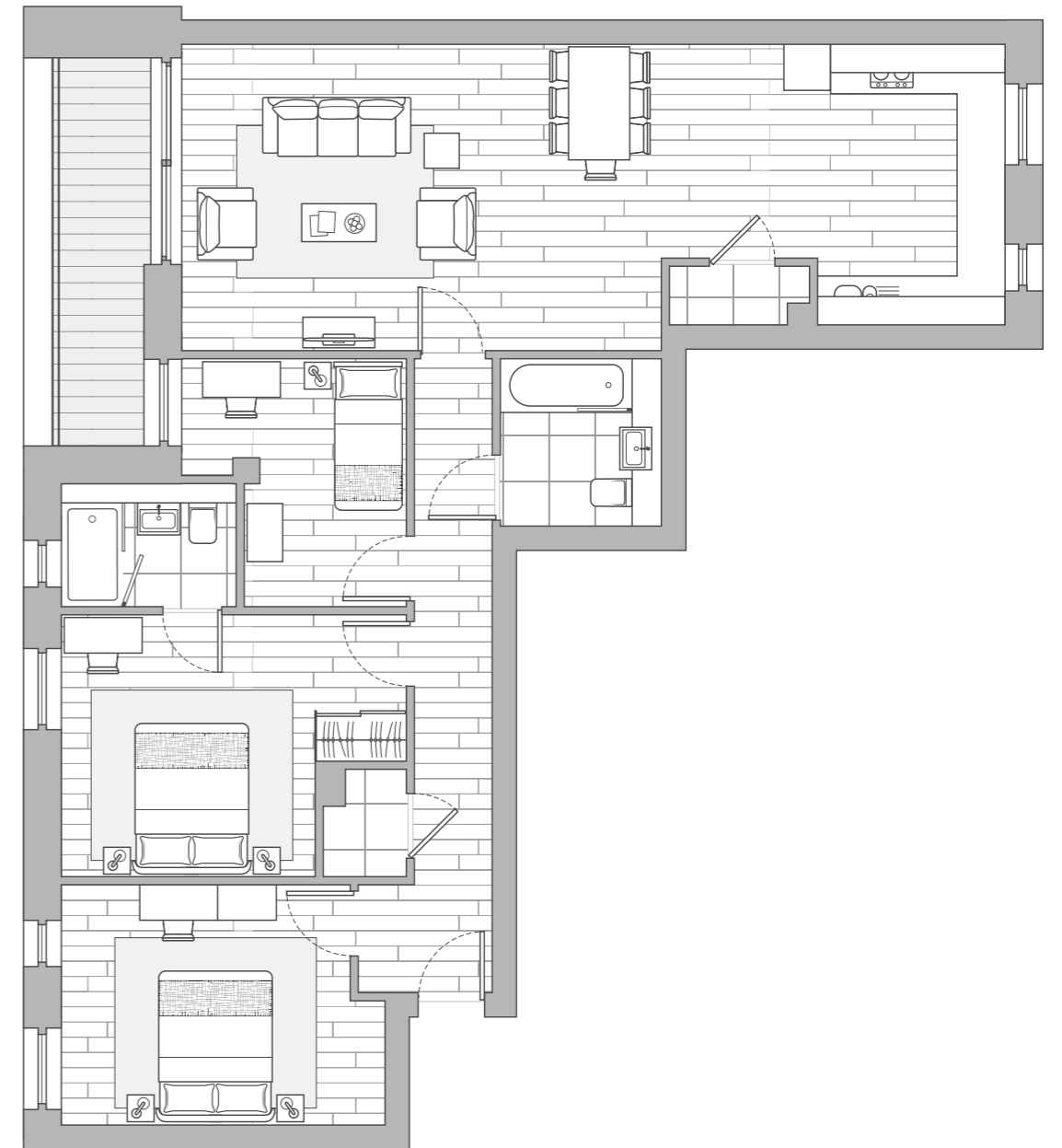


1N 202

1N 203



1N 202
3 Bedroom Apartment
INTERNAL AREA
98.3 sq m 1,058 sq ft

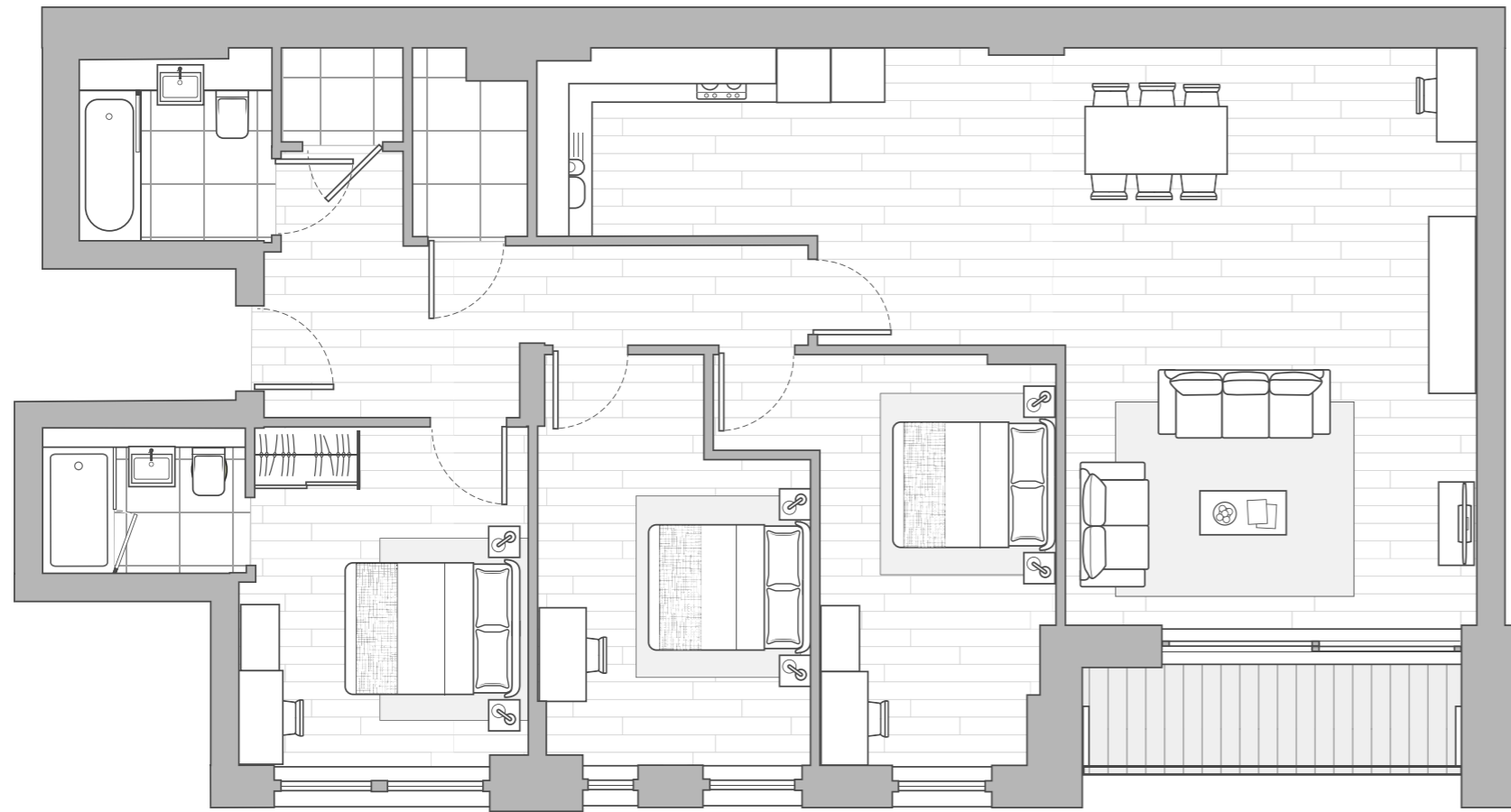


1N 203
1N 303
1N 403
3 Bedroom Apartment
INTERNAL AREA
99.0 sq m 1,066 sq ft

Floor plan layouts are intended to be correct, precise details may vary. Total areas shown are accurate to within 5%.

3A

BLOCK

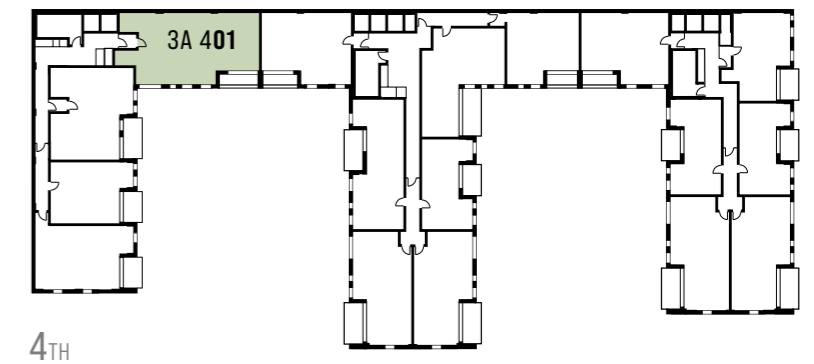


3A 201 3A 301 3A 401

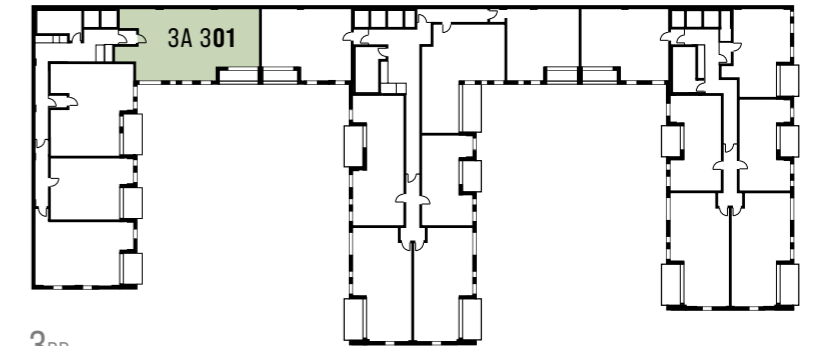
3 Bedroom Apartment

INTERNAL AREA

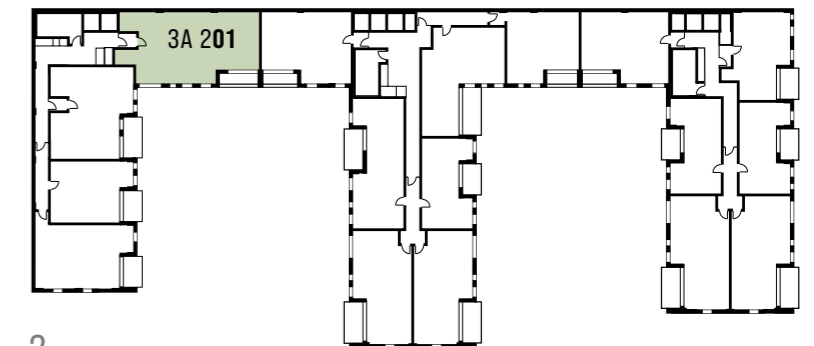
111.7 sq m 1,202 sq ft



4TH



3RD



2ND

Floor plan layouts are intended to be correct, precise details may vary. Total areas shown are accurate to within 5%.



Specification

GENERAL

- Matt finish painted walls and smooth ceilings.
- Satin white finish door linings, architraves and skirtings.
- Satin white finish internal doors.
- Oak plank effect click flooring (Amtico or similar) throughout.
- Brushed stainless steel door furniture including lever door handles.
- Brushed metal switch and socket plates, selected with USB sockets.
- Colour video security entryphone system.
- Recessed LED downlighting with white bezels.
- Thermostatically controlled central heating via wall mounted radiators.
- Pressurised hot and cold water supplies.
- Double glazing throughout.
- Virtually all with balcony, terrace or private garden area.
- Cabled for broadband internet.
- Cabled for Sky including Sky Q and terrestrial TV (subject to Sky subscription).

KITCHEN AREA

- Gloss grey designer kitchen units, all with soft close doors and concealed handles.
- Grey reconstituted stone worktop with full height glass splashback.
- Fully integrated electric appliances to include* :-
 - Single low level oven
 - 4 ring ceramic hob
 - Cooker hood
 - Washer/dryer (freestanding if within utility cupboard)
 - Dishwasher
 - Fridge/freezer
 - Microwave
- Stainless steel bowl and a half under-mounted sink with monobloc mixer tap to 1, 2 & 3 bedroom apartments (single bowl to studios).
- Low energy wall unit under lighting.
- Centralised appliance isolator switch panel.

LIVING/DINING ROOM

- TV socket set to living room (Sky Q) subject to subscription. All TV socket sets to include digital radio and terrestrial sockets.
- Brushed metal telephone & data sockets to living/dining area.

BATH & SHOWER ROOMS

- Large format white marbled porcelain tiled floor and fully tiled walls.
- Oak veneered alcove with feature mirror, LED downlight over basin. Mirrored cabinet and white reconstituted stone vanity top.
- Shaver socket.
- White bathroom suite featuring shower tray or steel bath as appropriate, back to wall WC, concealed dual flush cistern and wall mounted or semi-recessed basin.
- Chrome single lever mixer tap, bottle trap, cistern push plate, thermostatic bath filler/shower mixer diverter.
- Concealed plumbing fixed chrome shower head over bath and in shower enclosure with low level hose and handset.
- Chrome plated thermostatic electric heated towel rail.
- Clear glass hinged bath screen/shower enclosure with polished silver frame.

BEDROOM

- Floor to ceiling fitted wardrobe with interior shelf, hanging rail & drawers to bedroom one.
- TV socket set to bedrooms (Sky Q) subject to subscription. All TV socket sets to include digital radio and terrestrial sockets.
- Brushed metal telephone and data extension sockets to bedrooms.

APARTMENT HALLWAY & LANDING

- Audio/visual entryphone system connected to communal entrance door.

COMMUNAL AREAS

- Interior designed entrance foyer and lift lobby with fully tiled floor, feature décor and lighting.
- Low energy wall light fittings.
- Lifts to all apartment levels.
- Communal secure cycle storage.

* Studio apartments with smaller kitchen configurations may not include a full suite of appliances.

GALLIARD HOMES' ASSOCIATED MORTGAGE SPECIALISTS



Visionary Finance specialise in mortgages for first time buyers, home movers, re-mortgages and buy to let investors. Being fully independent of any lender, Visionary Finance have a vast amount of knowledge and experience in the mortgage industry ensuring they provide the best deal tailored to suite every buyer's individual needs.

www.visionaryfinance.co.uk | +44(0) 207 100 4754



GALLIARD HOMES' FURNITURE SOLUTION SPECIALISTS



New Concept Furnishings can provide furniture packs for all apartment styles with free delivery and installation included in each package. The company specialise in cost - efficient hassle free furnishing for UK and overseas owner / occupiers and buy to let investors.

www.newconceptfurnishings.com | +44(0) 208 502 3308



GALLIARD HOMES' OFFICIAL LETTING & MANAGEMENT AGENTS



LIFE Residential are Galliard Homes' official letting and management agents offering a comprehensive range of services for both UK and overseas landlords with some 8000 tenancies to date. LIFE Residential have offices in London and Hong Kong.

www.liferesidential.co.uk | +44(0) 208 896 9990



These particulars are compiled with care to give a fair description but we cannot guarantee their accuracy and they do not constitute an offer or contract. The developer reserves the right to alter any specifications and floor plan layouts without prior notice. All journey and walking times stated are approximate, source tfl.gov.uk, google.co.uk and crossrail.co.uk. Interior images are computer generated and are for illustrative purposes only. All development CGIs and artwork contained in this brochure is subject to copyright owned by Galliard Homes and cannot be reproduced in any way without prior written consent. Stadia One is a preferred marketing name only and may not be adopted as the postal address.





For further information & viewing appointments

GALLIARD HOMES

020 7620 1500

galliardhomes.com/wimbledon